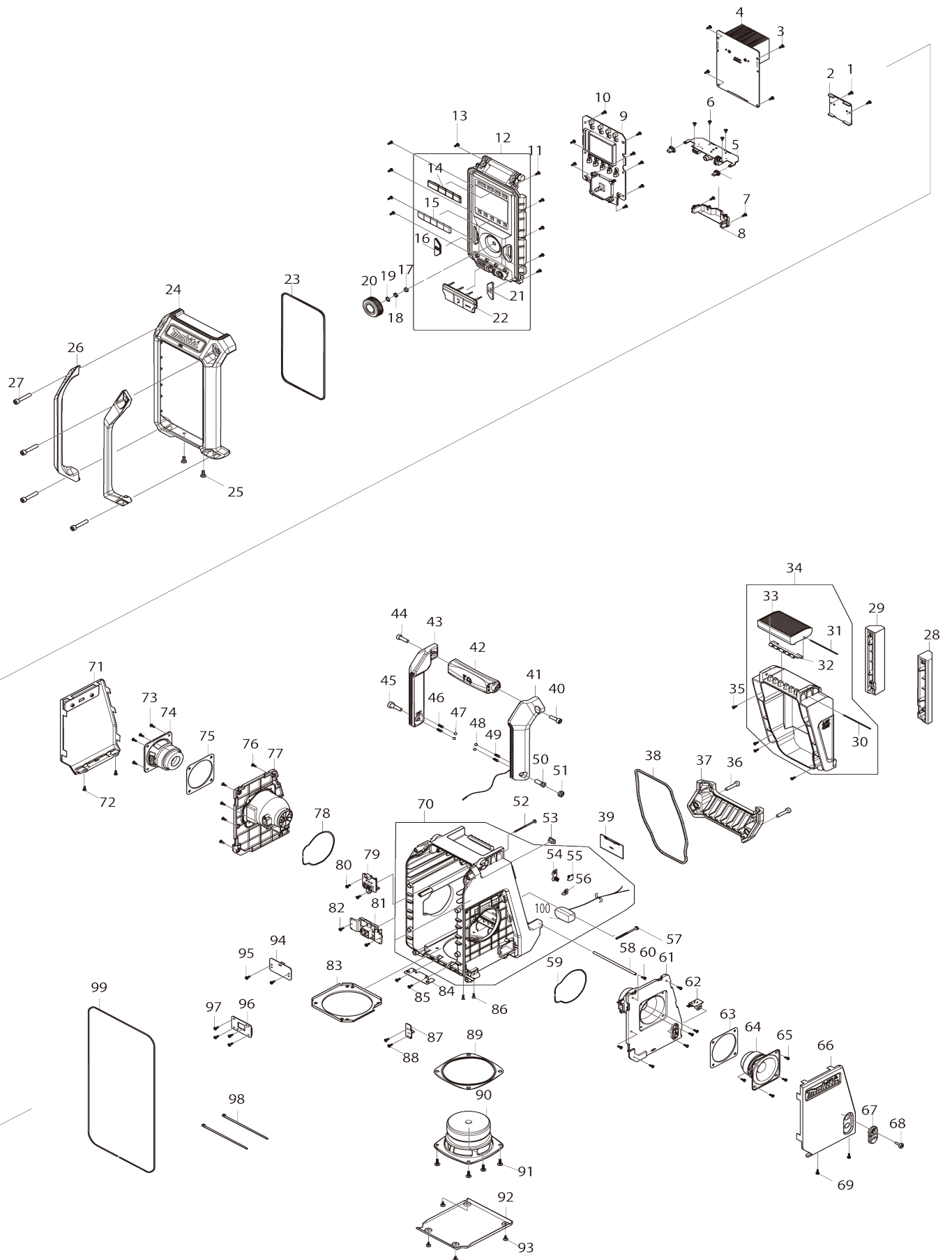


Model No.DMR114 JOB SITE RADIO



Model No.DMR114 JOB SITE RADIO

Item No.	Parts No.	Description	Interchangeability	Q'ty	New/Old	Note1	Note2
001	SE00000521	SCREW PTB 3X8(ZK) 29S16308001		2			
002	SE00000683	PCB H ASS'Y		1			
003	SE00000521	SCREW PTB 3X8(ZK) 29S16308001		4			
004	SE00000684	PCB A ASS'Y		1	*		
004-1	SE00001318	PCB A ASS'Y	<	1			
005	SE00000687	PCB P ASS'Y		1			
006	SE00000685	SCREW PTB 2.6X5 ZK		4			
007	SE00000521	SCREW PTB 3X8(ZK) 29S16308001		2			
008	SE00000752	JACK PCB HOLDER		1			
009	SE00000690	PCB C ASS'Y DMR114 CE		1	*		
009-1	SE00001294	PCB C ASS'Y DMR114 CE	<	1			
010	SE00000521	SCREW PTB 3X8(ZK) 29S16308001		8			
011	SE00000521	SCREW PTB 3X8(ZK) 29S16308001		5			
012	SE00000769	FRONT CABINET ASS'Y		1			
012		INC.14-16,21,22					
013	SE00000521	SCREW PTB 3X8(ZK) 29S16308001		5			
014	SE00000694	POWER KEY		1			
015	SE00000695	PRESET KEY		1			
016	SE00000696	INFO KEY		1			
017	SE00000754	EN/SW WASHER		1			
018	SE00000755	EN/SW NUT		1			
019	SE21B1110A	ROTARY KNOB RING		1			
020	SE00000698	ROTARY KNOB		1			
021	SE00000697	EQ KEY		1			
022	SE00000699	JACK RUBBER COVER		1	*		
022-1	SE00001243	JACK RUBBER COVER	<	1			
023	SE00000700	FRONT CABINET PACKING		1			
024	SE00000701	FRONT BUMPER		1			
025	SE09064161	SCREW M4X16		2			
026	SE00000703	FRONT BAR		2			
027	SE00000709	SCREW PTHE 6X33(CR)		4			
028	SE00000704	BATTERY BUMPER R		1			
029	SE00000705	BATTERY BUMPER L		1			
030	SE00000539	PIN D2X77 2100B300200		1			
031	SE00000533	PIN D2X88 2100B300100		1			
032	SE00000536	LOCKER HINGE 3300B30000010		1			
033	SE00000706	LOCKER COVER		1			
034	SE00000757	BATTERY COVER		1			
034		INC.30-33					
035	SE00000521	SCREW PTB 3X8(ZK) 29S16308001		4			
036	SE00000709	SCREW PTHE 6X33(CR)		2			
037	SE00000710	REAR BUMPER		1			

038	SE00000711	BATTERY COVER PACKING		1			
039	SE0307PC5Z	BACK UP BATTERY COVER		1			
040	SE00000176	SCREW PTHE6X20(CR)		1			
041	SE00000770	RIGHT HANDLE ASS'Y		1			
042	SE00000713	HANDLE BAR		1			
043	SE00000714	LEFT HANDLE ASS'Y		1			
044	SE00000176	SCREW PTHE6X20(CR)		1			
045	SE00000715	SCREW PTHE 6X17(CR)		1			
046	SE00000759	SPRING		2			
047	SE09994007	STEEL BALL		2			
048	SE09994007	STEEL BALL		2			
049	SE00000759	SPRING		2			
050	SE00000716	SCREW PTHE 7X16(CR)		1			
051	SE00000717	SCREW PTHE 10.8X4.5(CR)		1			
052	SE00000445	SCREW PTB 3X45(NI)		1			
053	SE00000721	UPDATE RUBBER		1			
054	SE021E9030	+/- BATTERY CONTACT ASS'Y		1			
055	SE00000467	BATTERY CONTACT (-)2100PL002 00		1			
056	SE00000466	BATTERY CONTACT(+) 2100RA00 700		1			
057	SE00000445	SCREW PTB 3X45(NI)		1			
058	SE021PC030	BATTERY COVER LOCKER		1			
059	SE00000730	SPEAKER HOLDER PACKING		1			
060	SE00000521	SCREW PTB 3X8(ZK) 29S1630800 1		7			
061	SE00000760	SPEAKER HOLDER R		1			
062	SE00000724	PCB F ASS'Y		1			
063	SE00000729	SPEAKER 2.5" PACKING		1			
064	SE00000728	SPEAKER ASS'Y 2.5"		1			
065	SE00000521	SCREW PTB 3X8(ZK) 29S1630800 1		4			
066	SE00000725	RIGHT SPEAKER NET ASS'Y		1			
067	SE00000726	DC JACK COVER		1			
068	SE00000404	SCREW PTHE 3X14(CR)		1			
069	SE00000521	SCREW PTB 3X8(ZK) 29S1630800 1		2			
070	SE00000771	REAR CABINET ASS'Y		1			
070		INC.54-56,100					
071	SE00000727	LEFT SPEAKER NET ASS'Y		1			
072	SE00000521	SCREW PTB 3X8(ZK) 29S1630800 1		2			
073	SE00000521	SCREW PTB 3X8(ZK) 29S1630800 1		4			
074	SE00000728	SPEAKER ASS'Y 2.5"		1			
075	SE00000729	SPEAKER 2.5" PACKING		1			
076	SE00000521	SCREW PTB 3X8(ZK) 29S1630800 1		5			
077	SE00000731	SPEAKER HOLDER L		1			
078	SE00000730	SPEAKER HOLDER PACKING		1			
079	SE00000732	TERMINAL 10.8V-A-3PIN		1			
080	SE00000521	SCREW PTB 3X8(ZK) 29S1630800 1		2			
081	SE00000733	TERMINAL E ASS'Y		1			

082	SE00000521	SCREW PTB 3X8(ZK) 29S1630800 1		2			
083	SE00000734	SPEAKER PLATE		1			
084	SE00000735	REAR PLATE		1			
085	SE00000521	SCREW PTB 3X8(ZK) 29S1630800 1		2			
086	SE00000736	SCREW JMF 3X10 ZK		2			
087	SE00000737	PCB B ASS'Y		1			
088	SE00000521	SCREW PTB 3X8(ZK) 29S1630800 1		2			
089	SE00000738	SPEAKER 4" PACKING		1			
090	SE00000739	SPEAKER ASS'Y 4"		1			
091	SE09064161	SCREW M4X16		4			
092	SE00000761	SPEAKER GRILL B		1			
093	SE00000741	SCERW PTT 3X8(ZK)		4			
094	SE00000762	PCB D ASS'Y		1			
095	SE00000521	SCREW PTB 3X8(ZK) 29S1630800 1		2			
096	SE00000743	PCB J ASS'Y		1			
097	SE00000521	SCREW PTB 3X8(ZK) 29S1630800 1		4			
098	SE00000195	W/TIES 100MM		2			
099	SE00000744	REAR CABINET PACKING		1			
100	SE00000587	LEAD WIRE W/CONNECTOR 170 MM		1			
A01	SE00000679	AC ADAPTER (CE)		1			

Please state Parts No. when your order.

Print Date 01/17/2025