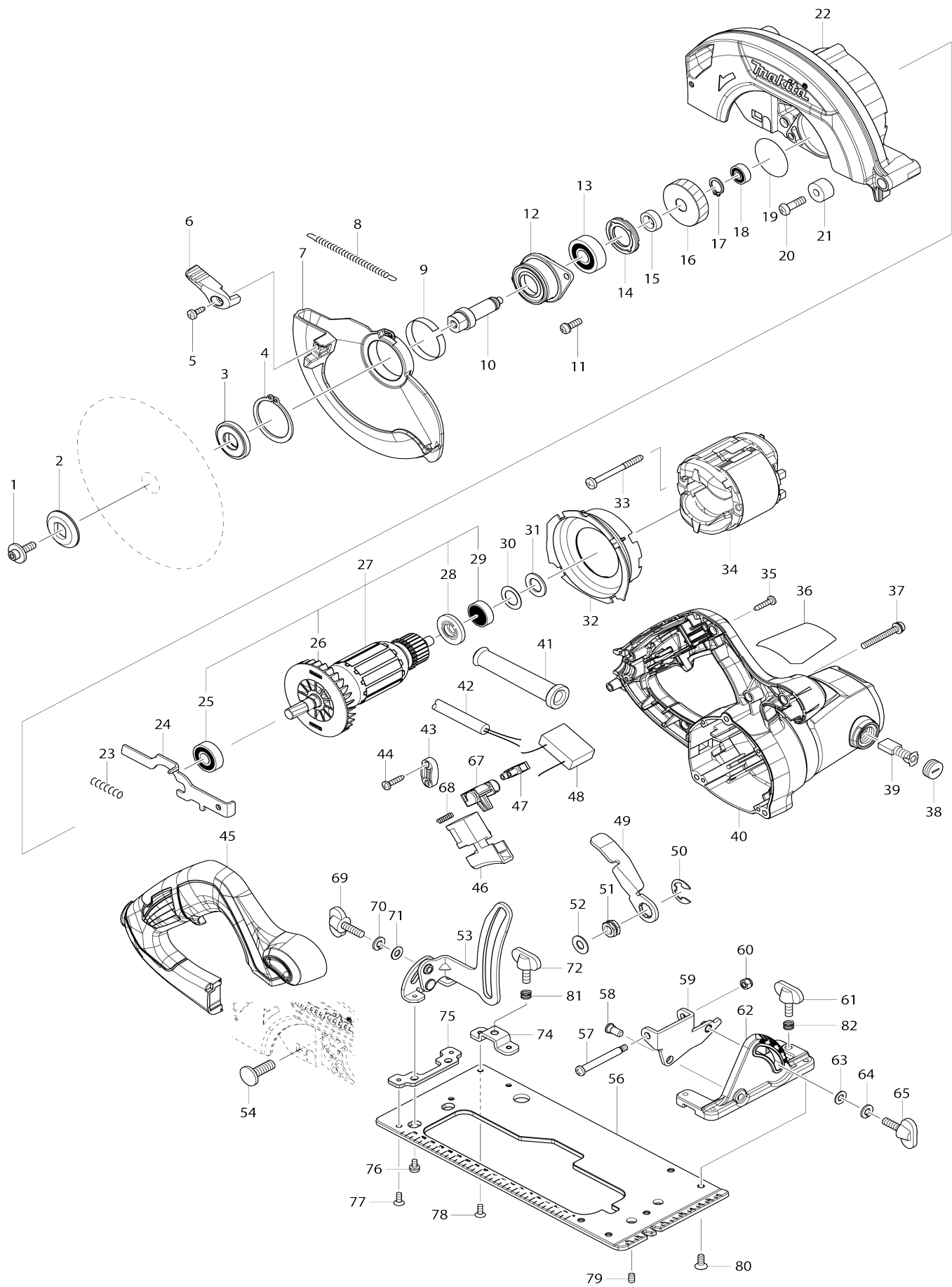


Model No.HS6601 165MM CIRCULAR SAW



Model No.HS6601 165MM CIRCULAR SAW

Item No.	Parts No.	Description	Interchangability	Q'ty	New/Old	Note1	Note2
001	266024-8	HEX. SOCKET HEAD BOLT M6X20		1			
002	224409-4	OUTER FLANGE 35		1			
003	224473-5	INNER FLANGE 35		1	*		
003-1	224593-5	INNER FLANGE 35	<	1			
004	961155-5	RETAINING RING S-38		1			
005	266034-5	TAPPING SCREW CT 4X16		1			
006	272258-3	LEVER 37		1	*		
006-1	271444-3	LEVER 37	O	1			
007	319307-6	SAFETY COVER		1			
008	231893-6	TENSION SPRING 4		1			
009	345391-5	THICKNESS RING		1			
010	326444-9	SPINDLE		1			
011	911226-8	PAN HEAD SCREW M5X18		2			
012	319088-2	BEARING BOX		1			
013	211129-9	BALL BEARING 6201DDW		1	*		
013-1	210195-3	BALL BEARING 6201DDW	O	1			
014	285852-2	BEARING RETAINER 19-33		1			
015	257173-2	RING 12		1			
016	227793-6	HELICAL GEAR 38		1			
017	961052-5	RETAINING RING (EXT) S-12		1			
018	210028-2	BALL BEARING 606ZZ		1			
019	213512-6	O RING 39		1			
020	265117-8	+PAN HEAD SCREW M6X20		1			
021	262502-6	RUBBER SLEEVE 6		1			
022	143224-6	BLADE CASE COMPLETE		1			
C10	213821-3	O-RING 26		1			
023	233117-6	COMPRESSION SPRING 6		1			
024	345317-7	SHAFT LOCK		1			
025	210059-1	BALL BEARING 6000DDW		1			
026	240064-4	FAN 70		1			
027	513459-7	ARMATURE ASS'Y 240V		1			
D10		INC. 25,26,28,29					
028	681644-1	INSULATION WASHER		1			
029	210005-4	BALL BEARING 608DDW		1			
030	253192-6	FLAT WASHER 14		1			
031	261109-5	RUBBER WASHER 13		1			
032	455354-4	BAFFLE PLATE		1			
033	266418-7	TAPPING SCREW 5X55		2			
034	593894-5	FIELD ASSEMBLY 240V		1			
C10	654020-2	RING TERMINAL		2			
C20	654501-6	CONNECTOR P-1.25		2	*		
C21	654485-8	PARALLEL SPLICE	O	2			
035	266326-2	TAPPING SCREW 4X18		5			
036	851N51-8	HS6601 NAME PLATE		1			
037	265104-7	PAN HEAD SCREW M5X40		3			
038	643750-0	BRUSH HOLDER CAP 7-11		2			
039	191963-2	CARBON BRUSH CB-303		1	*		

039-1	194996-6	CARBON BRUSH SET CB-303	O	1			
040	142798-4	MOTOR HOUSING COMPLETE		1			
C10	643708-9	BRUSH HOLDER 5-11		2			
041	682540-6	CORD GUARD 9.3-90		1	*		
041-1	682574-9	CORD GUARD 10-90	O	1			
042	665865-3	POWER SUPPLY CORD 1.0-2-2.5		1			
043	687124-5	STRAIN RELIEF		1			
044	266326-2	TAPPING SCREW 4X18		2			
045	455362-5	HANDLE COVER		1			
046	650245-6	SWITCH SGE115CDY-10		1			
047	654532-5	TERMINAL BLOCK 1P		1			
048	645192-4	NOISE SUPPRESSOR		1			
049	346311-2	LEVER PLATE		1			
050	257953-6	BOW STOP RING E-12		1			
051	252199-9	HEX. NUT M8-13		1			
052	941201-0	FLAT WASHER 8		1			
053	161337-1	DEPTH GUIDE COMPLETE		1			
054	266396-1	FLATHEAD SQUARENECKBOLT M8X24		1			
056	346894-2	BASE		1			
057	265118-6	+ PAN HEAD SCREW M5		1			
058	256480-0	SHOULDER PIN 6-7		1			
059	346827-7	ANGULAR GUIDE		1			
060	252103-8	HEX. LOCK NUT M5-8		1			
061	265701-9	THUMB SCREW M6X14		1			
062	319308-4	ANGULAR PLATE		1			
063	941151-9	FLAT WASHER 6		1			
064	942151-2	SPRING WASHER 6		1	*		
064-1	253428-3	SPRING WASHER 6	O	1	*		
065	265708-5	THUMB SCREW M6X20		1			
067	453284-3	LOCK OFF BUTTON		1			
068	231469-9	COMPRESSION SPRING 4		1			
069	265708-5	THUMB SCREW M6X20		1			
070	942151-2	SPRING WASHER 6		1	*		
070-1	253428-3	SPRING WASHER 6	O	1	*		
071	941151-9	FLAT WASHER 6		1			
072	265701-9	THUMB SCREW M6X14		1			
074	346847-1	BRACKET		1			
075	346846-3	PLATE		1			
076	911106-8	PAN HEAD SCREW M4X8		2			
077	912107-9	COUNTERSUNK HEAD SCREW M4X8		2	*		
077-1	265085-5	+ COUNTERSUNK HEAD SCREW M4X8	<	2			
078	912107-9	COUNTERSUNK HEAD SCREW M4X8		2	*		
078-1	265085-5	+ COUNTERSUNK HEAD SCREW M4X8	<	2			
079	266436-5	H.S.SET SCREW(FLAT POINT)M5X8		2			
080	912212-2	COUNTERSUNK HEAD SCREW M5X12		5			
081	233376-2	COMPRESSION SPRING 8		1			
082	233376-2	COMPRESSION SPRING 8		1			

A01	164095-8	GUIDE RULE		1			
A02	B-02917	T.C.T.SAW BLADE 165MM		1			
A03	783217-7	HEX. WRENCH 5		1			
A04	196520-1	DUST NOZZLE SET		1			
F01	194367-7	GUIDE RAIL 3000 SET		1			
F02	194368-5	GUIDE RAIL 1400 SET		1			
F04	194416-0	SHEET 10000 SET		1			
F05	194417-8	RUBBER SHEET 10000 SET		1			
F06	194418-6	POSITION SHEET 1400 SET		1			
F08	194910-2	POSITION SHEET 1900 SET		1			
F10	194925-9	GUIDE RAIL 1900 SET		1			
F12	196664-7	BEVEL GUIDE SET		1	*		
F14	197462-2	GUIDE RAIL ADAPTER SET		1			
F16	199140-0	GUIDE RAIL 1000 SET		1			
F17	199141-8	GUIDE RAIL 1500 SET		1			
F19	191B19-3	GUIDE RAIL ADAPTER E SET		1			
A05	821551-8	CONNECTOR PLASTIC CASE (TYP E3)		1			
C10	453974-8	LATCH		4			
A06	838314-5	INNER TRAY		1			
A07	807W72-2	HS6601J INDICATION LABEL		1			
A08	807W73-0	HS6601J PLASTIC CASE LABEL		2			

Please state Parts No. when your order.

Print Date 09/16/2024