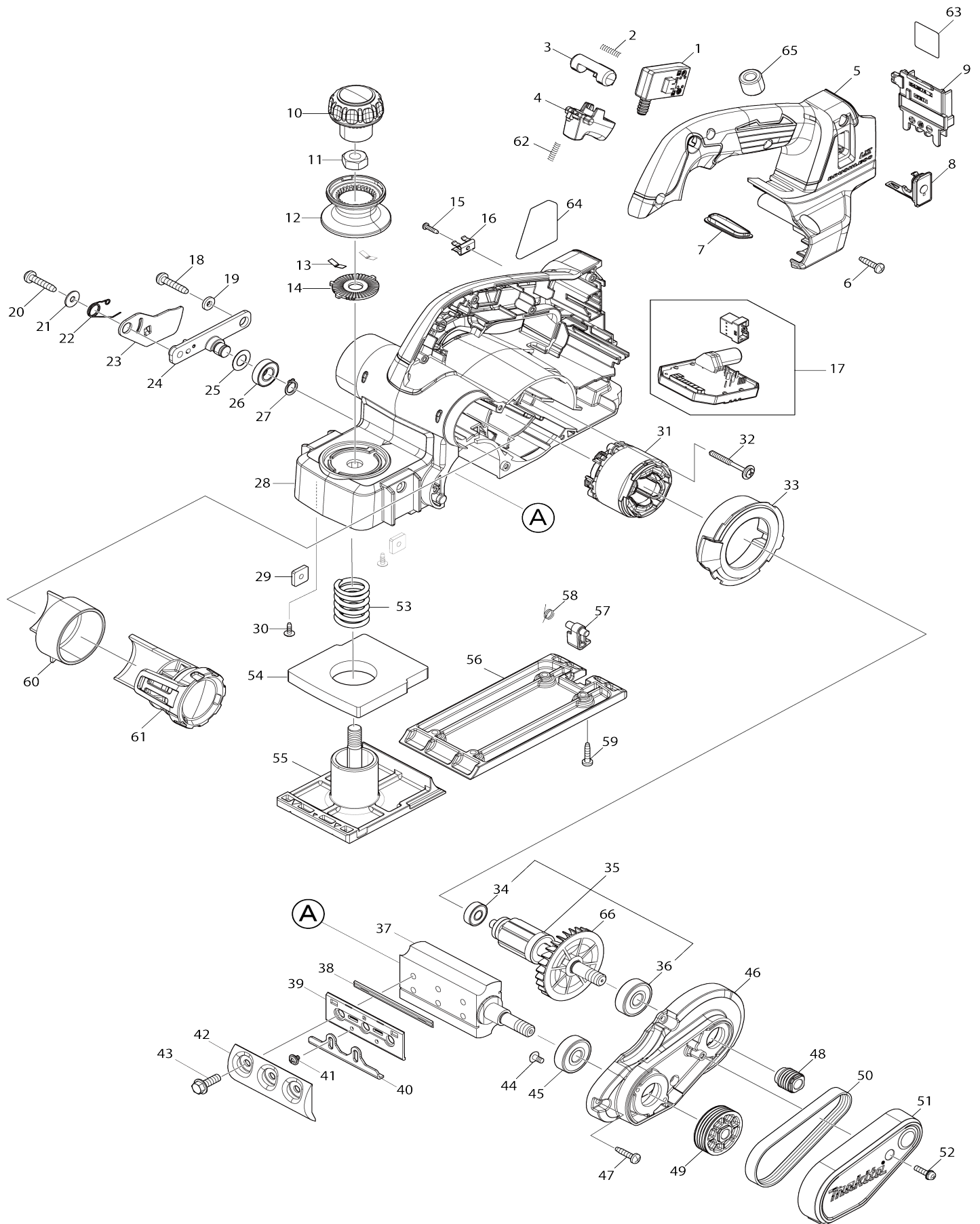


# Model No.DKP181 82MM CORDLESS PLANER



Model No.DKP181 82MM CORDLESS PLANER

Item No.	Parts No.	Description	Interchangability	Q'ty	New/Old	Note1	Note2
001	651083-9	SWITCH C3XA-1PSPM		1			
002	231433-0	COMPRESSION SPRING 4		1			
003	419704-7	LOCK OFF BUTTON		1			
004	457432-6	SWITCH LEVER		1			
005	140N52-4	HANDLE COVER COMPLETE		1	*		
C10	263005-3	RUBBER PIN 6		1	*		
005-1	140V49-1	HANDLE COVER COMPLETE	<	1	*		
C10	263005-3	RUBBER PIN 6		1	*		
005-2	140V73-4	HANDLE COVER COMPLETE	O	1	*		
C10	263005-3	RUBBER PIN 6		1	*		
005-3	136568-1	HANDLE COVER ASSEMBLY	O	1			
C10	263005-3	RUBBER PIN 6		1			
006	265995-6	TAPPING SCREW 4X18		6			
007	142948-1	INDICATION PLATE COMPLETE		1			
008	140F99-0	CAP COMPLETE		1			
C10	213218-6	O RING 16		1	*		
C11	213A05-9	O-RING16	O	1			
C20	818H07-8	CAP LABEL		1			
009	643874-2	TERMINAL		1			
010	451328-3	KNOB COVER		1			
011	252276-7	HEX. NUT M10		1			
012	459894-4	KNOB		1			
013	232185-6	LEAF SPRING		2			
014	347588-2	CAM PLATE		1			
015	266556-5	TAPPING SCREW 3X12		1			
016	232570-3	LEAF SPRING		1			
017	620B79-3	CONTROLLER		1	*		
017-1	620J24-6	CONTROLLER	S	1			
018	266041-8	TAPPING SCREW 5X25		1			
019	267012-8	FLAT WASHER 5		1			
020	266041-8	TAPPING SCREW 5X25		1			
021	253194-2	FLAT WASHER 5		1			
022	233521-9	TORSION SPRING 10		1			
023	345765-0	DRUM COVER		1			
024	158184-9	DRUM HOLDER COMPLETE		1	*		
024-1	141T27-2	DRUM HOLDER COMPLETE	O	1			
025	253758-2	FLAT WASHER 10		1			
026	210057-5	BALL BEARING 6900LLB		1			
027	961006-2	RETAINING RING S-10		1			
028	140N51-6	MAIN FRAME COMPLETE		1	*		
C10	263005-3	RUBBER PIN 6		1	*		
028-1	136534-8	MAIN FRAME ASSEMBLY	O	1			
C10	263005-3	RUBBER PIN 6		1			
029	264002-2	SQUARE NUT M5		2			
030	265A77-0	TAPPING SCREW 3X10		2			
031	629453-0	STATOR		1	*		
031-1	629B61-9	STATOR	S	1			

032	265679-6	TAPPING SCREW 4X40		2			
033	459891-0	BAFFLE PLATE		1			
034	210034-7	BALL BEARING 607LLB		1			
035	519590-7	ROTOR ASS'Y		1			
035		INC. 34,36,66					
036	211087-9	BALL BEARING 6200DDW		1			
037	158156-4	DRUM COMPLETE		1			
038	A-82921	T.C.T. MINI PLANER BLADE		1	*		
038-1	D-07945	82MM TCT MINI PLANER BLADE	O	1			
039	343433-9	SET PLATE F/MINI BLADE		2			
040	345644-2	ADJUST PLATE		2			
041	251246-3	+ PAN HEAD SCREW M4X5		4			
042	187676-1	DRUM PLATE SET		1			
043	251609-3	HEX. FLANGE HEAD BOLT M6X17		6			
044	251291-8	+ TRUSS HEAD SCREW M4X8		2			
045	211087-9	BALL BEARING 6200DDW		1			
046	140N50-8	BRACKET COMPLETE		1			
C10	263002-9	RUBBER PIN 4		1			
047	265995-6	TAPPING SCREW 4X18		4			
048	222193-5	V-PULLEY 4-17L		1			
049	222194-3	V-PULLEY 4-39.5		1			
050	225071-8	POLY V-BELT 4-241		1			
051	459893-6	BELT COVER		1			
052	911133-5	PAN HEAD SCREW M4X18		1			
053	231004-3	COMPRESSION SPRING 18		1	*		
053-1	233395-8	COMPRESSION SPRING 18	O	1			
054	422531-3	RUBBER PACKING		1			
055	319872-5	FRONT BASE		1			
056	318499-8	BASE		1	*		
056-1	312C89-7	BASE	O	1			
057	451392-4	FOOT		1	*		
057-1	413L64-1	FOOT	<	1			
058	231698-4	TORSION SPRING 7		1			
059	265995-6	TAPPING SCREW 4X18		4			
060	459892-8	NOZZLE		1			
061	125353-7	DUCT ASS'Y		1			
062	231433-0	COMPRESSION SPRING 4		1			
063	856J96-7	DKP181 SERIAL NO. LABEL		1			
064	856J88-6	DKP181 NAME PLATE		1			
065	688163-8	LINE FILTER		1	*		
066	240079-1	FAN 62		1			
067	620K37-3	CONTROLLER B	S	1			
068	652119-7	PAN HEAD SCREW M2X6	S	6			
A01	122785-9	GUIDE RULE ASS'Y		1			
C10	213009-5	O RING 4		1			
C20	251871-0	SCREW M5X10		1			
C30	251878-6	SCREW M5X20		1			
C40	253807-5	FLAT WASHER 5		2			
C50	345768-4	GUIDE HOLDER		1			
A02	123062-2	BLADE GAUGE ASS'Y		1	*		
C10	911228-4	PAN HEAD SCREW M5X18		2	*		
C20	411086-3	GAUGE PLATE		1	*		

A02-1	127669-6	BLADE GAUGE ASSEMBLY	O	1	*		
C10	911228-4	PAN HEAD SCREW M5X18		2	*		
C20	418465-6	GAUGE PLATE		1	*		
A02-2	122695-0	BLADE GAUGE ASS'Y	O	1			
C10	265131-4	PAN HEAD SCREW M5X18		2			
C20	418465-6	GAUGE PLATE		1			
A03	782209-3	SOCKET WRENCH 9		1			
A04	251878-6	SCREW M5X20		1			
A05	253807-5	FLAT WASHER 5		1			
A06	342390-8	DEPTH GUIDE		1			
A08B	198900-7	WIRELESS UNIT SET		1	*		
A08-1 B	198900-7	WIRELESS UNIT SET	<	1	*		
A08-2 B	198900-7	WIRELESS UNIT SET	<	1	*		
A08-3 B	198900-7	WIRELESS UNIT SET	O	1	*		
A08-4 B	198900-7	WIRELESS UNIT SET	<	1			
A11	442198-1	ANTI CORROSION PAPER		1	*		
F07	193540-6	SET PLATE 82 SET		1			
F08	193540-6	SET PLATE 82 SET		1			
F10-2	198900-7	WIRELESS UNIT SET	<	1	*		
F10-3	198900-7	WIRELESS UNIT SET	O	1	*		
F10-4	198900-7	WIRELESS UNIT SET	<	1			

Please state Parts No. when your order.

Print Date 02/20/2025