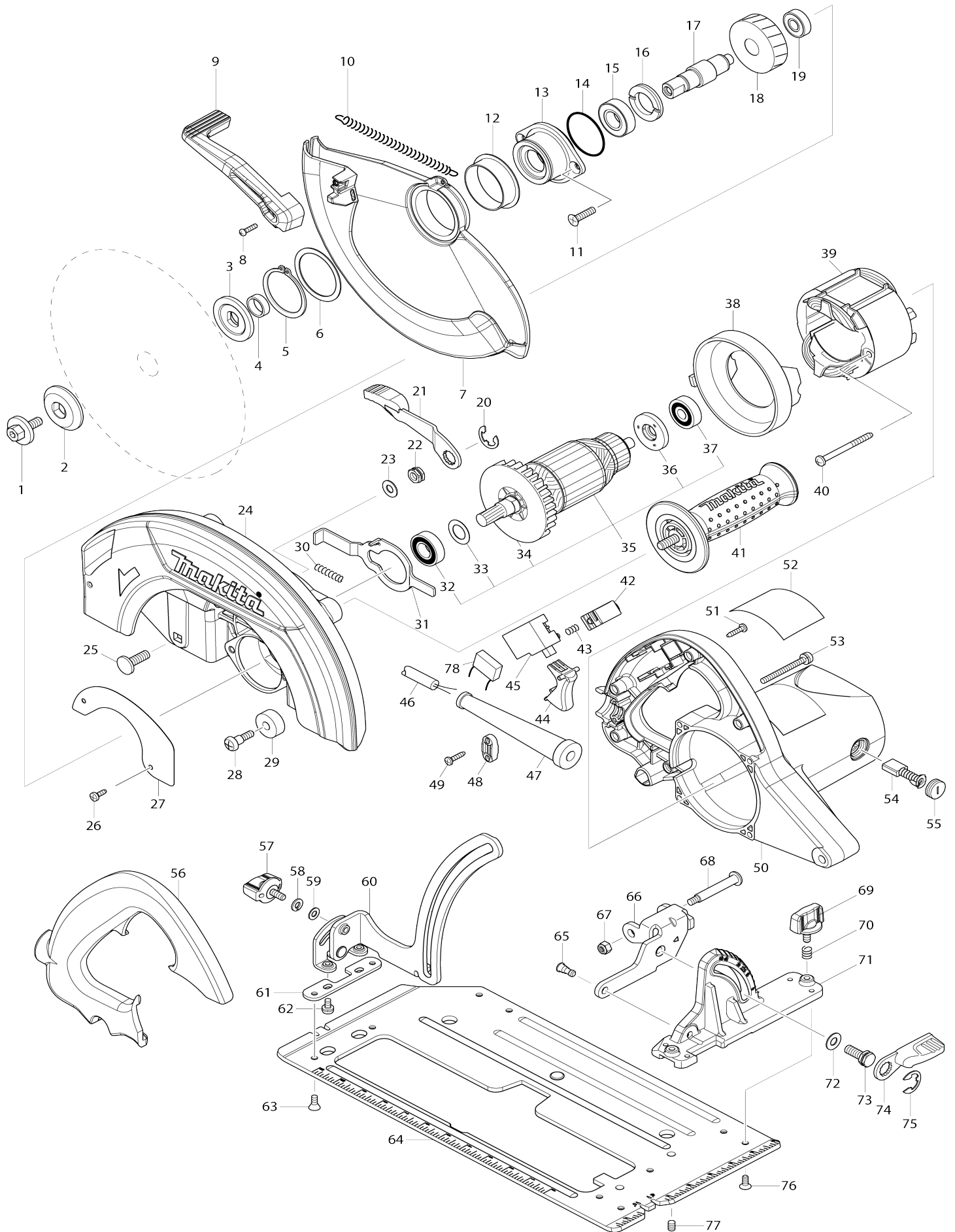


# Model No.HS0600 260MM CIRCULAR SAW



Model No.HS0600 260MM CIRCULAR SAW

Item No.	Parts No.	Description	Interchangability	Q'ty	New/Old	Note1	Note2
001	251519-4	HEX.SOCKET HEX.BOLT M8X25		1			
002	224325-0	OUTER FLANGE 45		1			
003	224326-8	INNER FLANGE 45		1			
004	257279-6	RING 17		1			
005	961202-2	RETAINING RING S-45		1			
006	267219-6	FLAT WASHER 45		1			
007	319527-2	SAFETY COVER		1			
008	265178-8	PAN HEAD SCREW M4X16		1			
009	272258-3	LEVER 37		1	*		
009-1	271444-3	LEVER 37	O	1			
010	232356-5	TENSION SPRING 6		1			
011	265031-8	+ COUNTERSUNK HEAD SCREW M6X20		2			
012	457317-6	SPACER		1			
013	319529-8	BEARING BOX		1			
014	213560-5	O RING 44		1	*		
014-1	213676-6	O RING 53	X	1			
015	210301-0	BALL BEARING 6003DDW		1			
016	285809-3	BEARING RETAINER 23-36		1			
017	326877-8	SPINDLE		1			
018	226523-2	HELICAL GEAR 39		1			
019	210141-6	BALL BEARING 6000DDW		1	*		
019-1	210332-9	BALL BEARING 6000DDW	O	1			
020	257953-6	BOW STOP RING E-12		1			
021	271432-0	LEVER 107		1			
022	252199-9	HEX. NUT M8-13		1			
023	941201-0	FLAT WASHER 8		1			
024	144284-1	BLADE CASE COMPLETE		1			
C10	213459-4	O RING 32		1			
025	266396-1	FLATHEAD SQUARENECKBOLT M8X24		1			
026	266026-4	TAPPING SCREW BIND CT 4X12		2			
027	347123-6	COVER PLATE		1			
028	251518-6	+ PAN HEAD SCREW M6		1			
029	262007-6	RUBBER RING 8		1			
030	233264-3	COMPRESSION SPRING 5		1			
031	344844-1	SHAFT LOCK		1			
032	211236-8	BALL BEARING 6002DDW		1			
033	267164-5	FLAT WASHER 15		1			
034	240003-4	FAN 80		1	*		
035	516818-4	ARMATURE ASS'Y 220V		1			
035		INC. 32-34,36,37					
036	681630-2	INSULATION WASHER		1			
037	211066-7	BALL BEARING 6200LLB		1			
038	417114-2	BAFFLE PLATE		1			
039	596208-7	FIELD ASS'Y 220V		1			
C10	654020-2	RING TERMINAL		2			
C20	654502-4	CONNECTOR P-2		2			

040	266044-2	TAPPING SCREW 5X60		2			
041	144285-9	GRIP 36 COMPLETE		1			
042	417117-6	LOCK-OFF BUTTON		1			
043	233284-7	COMPRESSION SPRING 5		1			
044	417115-0	SWITCH LEVER		1			
045	651984-1	SWITCH TG71B-2		1			
046	665865-3	POWER SUPPLY CORD 1.0-2-2.5		1			
047	682564-2	CORD GUARD		1			
048	687124-5	STRAIN RELIEF		1			
049	266326-2	TAPPING SCREW 4X18		2			
050	151848-4	MOTOR HOUSING COMPLETE		1			
C10	643653-8	BRUSH HOLDER 6.5-13.5		2			
051	266326-2	TAPPING SCREW 4X18		5			
052	852Y38-9	HS0600 NAME PLATE		1			
053	911273-9	PAN HEAD SCREW M5X50		4			
054	181044-0	CARBON BRUSH CB-153		1	*		
054-1	194985-1	CARBON BRUSH SET CB-153	O	1			
055	643650-4	BRUSH HOLDER CAP 6.5-13.5		2			
056	417118-4	HANDLE COVER		1			
057	265798-8	THUMB SCREW M6X14		1			
058	942151-2	SPRING WASHER 6		1	*		
058-1	253428-3	SPRING WASHER 6	O	1	*		
059	941151-9	FLAT WASHER 6		1			
060	144253-2	DEPTH GUIDE COMPLETE		1			
061	347124-4	PLATE		1			
062	251212-0	+ FLAT HEAD SCREW M5X13		2			
063	912202-5	COUNTERSUNK HEAD SCREW M5 X8		2			
064	347134-1	BASE		1			
065	256351-1	SHOULDER PIN 6-7		1			
066	347122-8	ANGULAR GUIDE		1			
067	252014-7	HEX. LOCK NUT M6-10		1			
068	251528-3	+ PAN HEAD SCREW M6		1			
069	265798-8	THUMB SCREW M6X14		1			
070	233376-2	COMPRESSION SPRING 8		1			
071	319528-0	ANGULAR PLATE		1			
072	941201-0	FLAT WASHER 8		1			
073	251520-9	HEX. BOLT M8X20		1			
074	272253-3	LEVER 56		1			
075	257953-6	BOW STOP RING E-12		1			
076	912212-2	COUNTERSUNK HEAD SCREW M5 X12		5			
077	266208-8	H.S.SET SCREW(CUP POINT)M6X8		2			
078	645190-8	NOISE SUPPRESSOR		1			
A01	164367-1	GUIDE RULE		1			
A02	410047-0	WRENCH HOLDER 5.6		1			
A03	B-12859	TCT SAW BLADE 270X18TX30		1			
A04	783204-6	HEX. WRENCH 6		1			
A05	198263-1	DUST NOZZLE SET		1			
F01	194367-7	GUIDE RAIL 3000 SET		1			
F02	194368-5	GUIDE RAIL 1400 SET		1			
F04	194416-0	SHEET 10000 SET		1			

F05	194417-8	RUBBER SHEET 10000 SET		1			
F06	194418-6	POSITION SHEET 1400 SET		1			
F08	194910-2	POSITION SHEET 1900 SET		1			
F10	194925-9	GUIDE RAIL 1900 SET		1			
F12	196664-7	BEVEL GUIDE SET		1	*		
F15	198570-2	GUIDE RAIL ADAPTER F SET(EU)		1			
F17	199140-0	GUIDE RAIL 1000 SET		1			
F18	199141-8	GUIDE RAIL 1500 SET		1			

Please state Parts No. when your order.

Print Date 25/11/2024