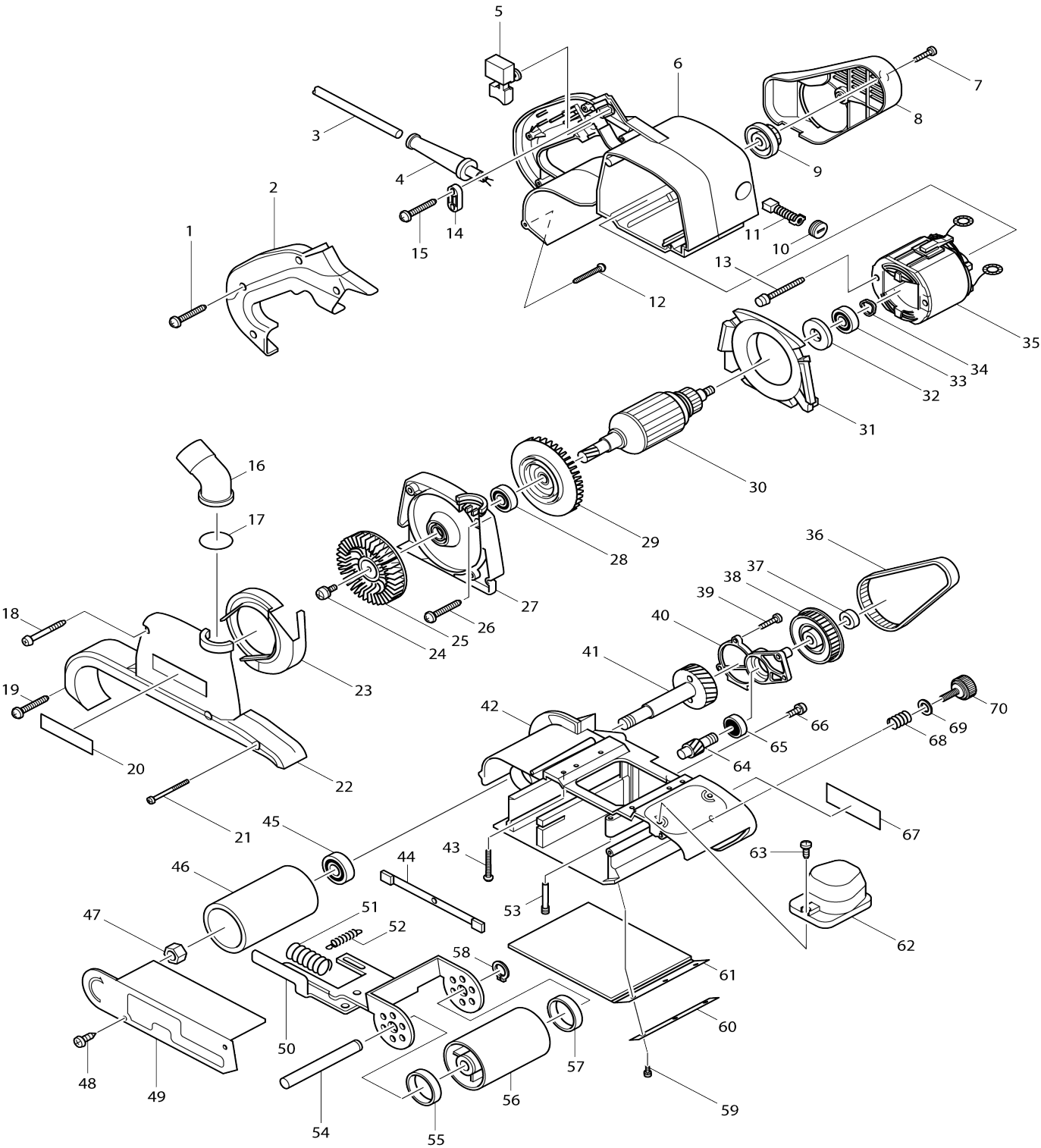


Model No.9403 BELT SANDER 100MM



Model No.9403 BELT SANDER 100MM

Item No.	Parts No.	Description	Interchangability	Q'ty	New/Old	Note1	Note2
001	265995-6	TAPPING SCREW 4X18		4			
002	416496-9	HANDLE COVER		1	*		
002-1	413241-3	HANDLE COVER	S	1			
003I_	665883-1	POWER SUPPLY CORD 1.0-2-5.0		1			
004B_	682540-6	CORD GUARD 9.3-90		1			
005	651284-9	SWITCH SGEL115CDY-6		1	*		
005-1	650230-9	SWITCH TGL115CDT-2	O	1			
006	150981-9	MOTOR HOUSING COMPLETE		1	*		
C10	643708-9	BRUSH HOLDER 5-11		2	*		
006-1	141N38-1	MOTOR HOUSING COMPLETE	S	1			
C10	643708-9	BRUSH HOLDER 5-11		2			
007	266034-5	TAPPING SCREW CT 4X16		1			
008	416495-1	BELT COVER		1			
009	222147-2	PULLEY 10-24.1		1			
010	643750-0	BRUSH HOLDER CAP 7-11		2			
011	191963-2	CARBON BRUSH CB-303		1	*		
011-1	194996-6	CARBON BRUSH SET CB-303	O	1			
012	265995-6	TAPPING SCREW 4X18		1			
013	266056-5	TAPPING SCREW 5X45		2			
014C_	687063-9	CORD CLAMP		1	*		
014C1	687052-4	STRAIN RELIEF	X	1			
015	265995-6	TAPPING SCREW 4X18		2			
016	416497-7	DUST NOZZLE		1			
017	213415-4	O RING 28		1			
018	266069-6	TAPPING SCREW 4X45		2			
019	265995-6	TAPPING SCREW 4X18		1			
020	819064-1	MAKITA MARK		1			
021	266203-8	TAPPING SCREW BIND CT 4X40		1			
022	317018-7	DUST COLLECTOR COVER		1			
023	416494-3	SEPARATOR		1			
024	911213-7	PAN HEAD SCREW M5X12		1			
025	241662-7	FAN 80		1			
026	265995-6	TAPPING SCREW 4X18		2			
027	317021-8	DUST COLLECTOR BRACKET		1			
028	211088-7	BALL BEARING 6000DDW		1			
029	240013-1	FAN 84		1			
030B_	516783-7	ARMATURE ASS'Y 220-240V		1			
D10		INC. 28,29,32,33					
031	416498-5	BAFFLE PLATE		1			
032	681649-1	INSULATION WASHER		1			
033	211088-7	BALL BEARING 6000DDW		1			
034	253946-1	WAVE WASHER 18		1	*		
034-1	267715-4	WAVE WASHER 20	O	1			
035B_	596193-4	FIELD ASS'Y 220-240V		1			
C10	654020-2	RING TERMINAL		2			
C20	654502-4	CONNECTOR P-2		2			
036	225081-5	SYNCHRO BELT		1			

037	931503-2	HEX. NUT M10		1			
038	222148-0	PULLEY 11-55.6		1			
039	266034-5	TAPPING SCREW CT 4X16		3			
040	317020-0	GEAR COVER		1			
041	153265-4	HELICAL GEAR 43 COMPLETE		1	*		
041-1	153291-3	HELICAL GEAR 43 COMPLETE	S	1			
042	150979-6	FRAME COMPLETE		1			
043	265995-6	TAPPING SCREW 4X18		4			
044	150846-5	EDGE SLIDER COMPLETE		1			
045	211131-2	BALL BEARING 6001DDW		1			
046	162199-0	DRIVING ROLLER		1			
047	252087-0	HEX. NUT M12-19		1			
048	266026-4	TAPPING SCREW BIND CT 4X12		2			
049	344622-9	SAFETY COVER		1			
050	163398-7	TENSION ROLLER ARM		1			
051	233235-0	COMPRESSION SPRING 12		1			
052	231819-8	TENSION SPRING 4		1			
053	321980-0	SUPPORT PIN		1			
054	323829-0	TENSION ROLLER SHAFT		1			
055	253922-5	CUP WASHER 12		1			
056	150978-8	TENSION ROLLER COMPLETE		1			
C10	214116-7	PLANE BEARING 12		2			
C20	421044-1	SPONGE SHEET 42-47		1			
057	253922-5	CUP WASHER 12		1			
058	961052-5	RETAINING RING (EXT) S-12		1			
059	911118-1	PAN HEAD SCREW M4X12		3			
060	344623-7	STRAP WASHER		1			
061A_	421093-8	CORK RUBBER PLATE		1			
062	416499-3	FRONT GRIP		1			
063	266034-5	TAPPING SCREW CT 4X16		2			
064	226506-2	HELICAL GEAR 12		1	*		
064-1	226551-7	HELICAL GEAR 12	S	1			
065	211066-7	BALL BEARING 6200LLB		1			
066	911213-7	PAN HEAD SCREW M5X12		1			
067	859611-6	NAME PLATE 9403		1	*		
067-1	852072-9	9403 NAME PLATE	<	1			
068	231225-7	COMPRESSION SPRING 16		1			
069	253707-9	FLAT WASHER 16		1			
070	251815-0	SCREW M6X25		1			
A01	794135-4	ABRASIVE BELT 100X610 WA80		1			
A02	122562-9	DUST BAG ASS'Y		1			
E01	654575-7	TERMINAL BLOCK		1			
E02-1	645142-9	NOISE SUPPRESSOR		1			
E03	652257-5	CLAMP WASHER		2			
E09	421648-9	CARBON PLATE		1	*		
E09-1	424057-1	CARBON PLATE	O	1			
F03	192349-3	JOINT 25		0			
003H 1	665883-1	POWER SUPPLY CORD 1.0-2-5.0		1			
004A1	682540-6	CORD GUARD 9.3-90		1			
014-1	687052-4	STRAIN RELIEF		1			
A03	821551-8	CONNECTOR PLASTIC CASE (TYP		1			

		E3)					
C10	453974-8	LATCH		4			
A04	837652-2	INNER TRAY		1			
A05	800X24-8	9403J INDICATION LABEL		1			
A06	800X25-6	9403J PLASTIC CASE LABEL		2			

Please state Parts No. when your order.

Print Date 14/06/2024