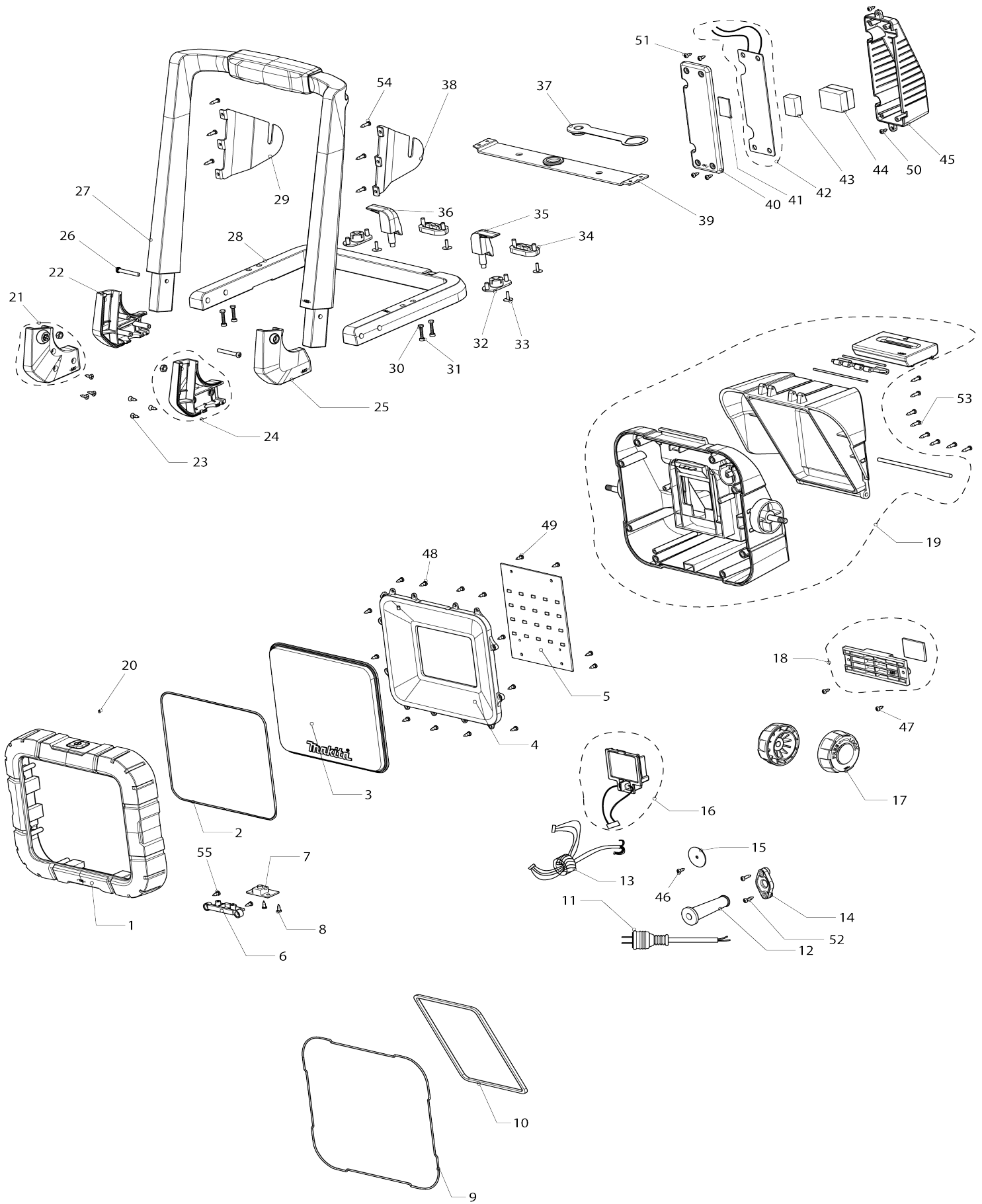


Model No.DML805 RECHARGEABLE FLASH LIGHT



Model No.DML805 RECHARGEABLE FLASH LIGHT

Item No.	Parts No.	Description	Interchangability	Q'ty	New/Old	Note1	Note2
001	GM00001356	HOUSING(FRONT) ROS88050100		1			
002	GM00001353	PACKING C9020805002		1			
003	GM00001378	LENS ROS88052000		1			
004	GM00001358	REFLECTOR ROS88050300		1			
005	GM00001359	LED CIRCUIT ROS88050400		1			
006	GM00001341	SWITCH BRACKET C2820805007		1			
007	GM00001360	SWITCH CIRCUIT ROS88050500		1			
008	GM00001332	SCREW 3 X 8 PB		2			
009	GM00001354	PACKING C9020805003		1			
010	GM00001352	PACKING C9020805001		1			
011	GM00001424	POWER SUPPLY CORD		1			
012	GM00001417	CORD GUARD		1			
013-1	GM00001429	LEAD WIRE ASSY		1			
014	GM00001344	CORD CLAMP C2820805010		1			
015	GM00001338	CORD HOLDER B0405805120		1			
016	GM00001430	BATTERY HOLDER		1			
017	GM00001342	KNOB C2820805008		2			
018	GM00001363	FIX PLATE ASSY ROS88050800		1			
019	GM00001379	BATTERY COVER ASSY ROS88051900		1			
020	GM00001343	SWITCH ROD C2820805009		1			
021	GM00001371	BRACKET LR ASSY ROS88051600		1			
022	GM00001345	BRACKET LL C2820805013		1			
023	GM00001334	SCREW 3 X 12 KA B0130120721		6			
024	GM00001372	BRACKET RL ASSY ROS88051700		1			
025	GM00001346	BRACKET RR C2820805016		1			
026	GM00001336	SCREW PM4X29 B0140290704		2			
027	GM00001365	FRAME ROS88051000		1			
028	GM00001366	BASE ROS88051100		1			
029	GM00001367	HANGER L ROS88051200		1			
030	GM00001335	SCREW M3 X18 B0130180754		4			
031	GM00001337	NUT M3 B0203007000		4			
032	GM00001350	FOOT (FRONT) C7420805002		2			
033	GM00001331	SCREW 2.6 X 10 PWB B0126100706		4			
034	GM00001351	FOOT (BACK) C7420805003		2			
035	GM00001347	CORD HOOK(R) C2820805017		1			
036	GM00001348	CORD HOOK (L) C2820805018		1			
037	GM00001349	ADAPTER C5220805001		1			
038	GM00001368	HANGER R ROS88051300		1			
039	GM00001369	UNDER STAND ROS88051400		1			
040	GM00001340	HOUSING (BOTTOM) C1920805002		1			
041	GM00001374	PAD(A) A3255201501		1			
042	GM00001415	POWER CIRCUIT ASSY		1			
043	GM00001328	PAD(B) A3255201300		1			
044	GM00001375	PAD(C) A3255252501		1			
045	GM00001376	HOUSING (TOP) C1920805003		1			

046	GM00001332	SCREW 3 X 8 PB		1			
047	GM00001332	SCREW 3 X 8 PB		2			
048	GM00001332	SCREW 3 X 8 PB		12			
049	GM00001332	SCREW 3 X 8 PB		4			
050	GM00001332	SCREW 3 X 8 PB		2			
051	GM00001332	SCREW 3 X 8 PB		4			
052	GM00001333	SCREW 3 X 12PB B0130120702		2			
053	GM00001333	SCREW 3 X 12PB B0130120702		8			
054	GM00001333	SCREW 3 X 12PB B0130120702		6			
055	GM00001333	SCREW 3 X 12PB B0130120702		2			
A01-1	GM00001427	CABLE TIE		1			

Please state Parts No. when your order.

Print Date 24/10/2023