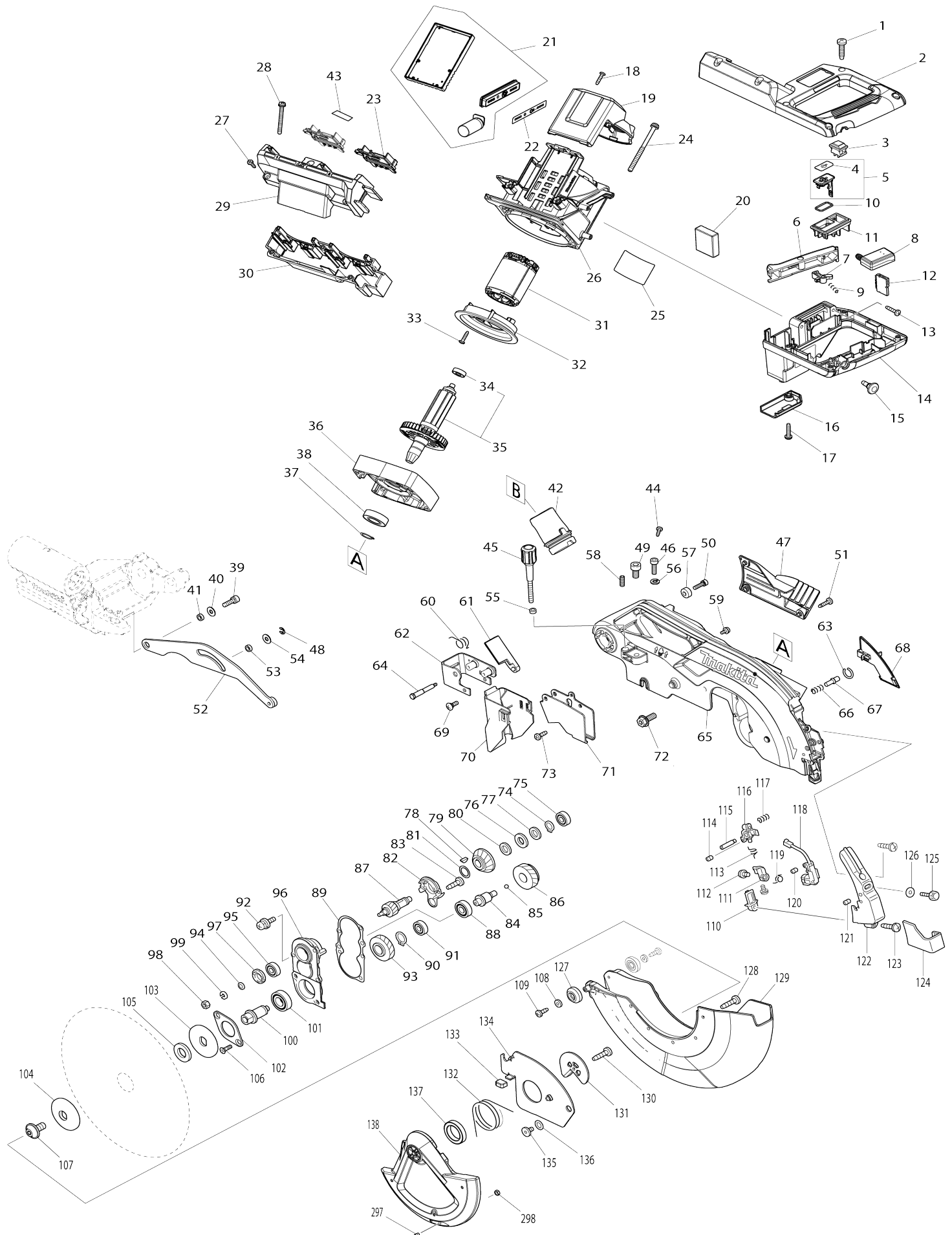
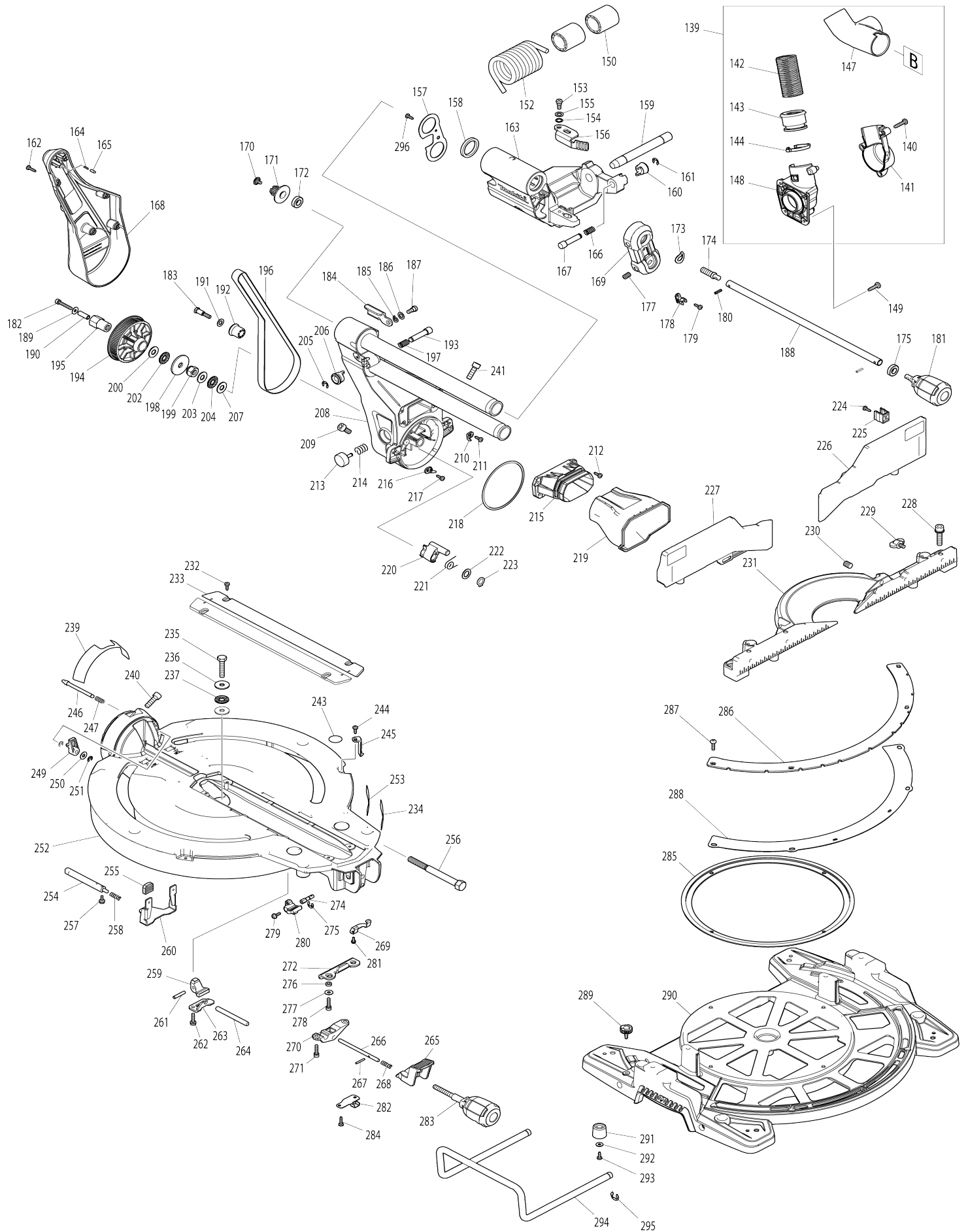


Model No.DLS111 260MM DC SLIDE CPD. MITER SAW



Model No.DLS111 260MM DC SLIDE CPD. MITER SAW



Model No.DLS111 260MM DC SLIDE CPD. MITER SAW

Item No.	Parts No.	Description	Interchangeability	Q'ty	New/Old	Note1	Note2
001	265995-6	TAPPING SCREW 4X18		6			
002	183H70-3	HANDLE SET		1			
C10	810486-8	CAUTION LABEL		1			
002		INC. 14					
003	632L09-2	SWITCH UNIT		1			
004	813T75-8	CAP LABEL		1	*		
004-1	818H48-4	CAP LABEL	<	1			
005	183H92-3	CAP SET		1	*		
005		INC. 4			*		
005	183J85-2	CAP SET		1	*		
005-1	183J85-2	CAP SET	O	1	*		
005-1		INC. 4			*		
005-1	140G30-2	CAP COMPLETE	<	1			
005-2	140G30-2	CAP COMPLETE	<	1			
005-2		INC. 4					
006	457935-0	SWITCH LEVER		1			
007	416356-5	LOCK-OFF LEVER		1			
008	651083-9	SWITCH C3XA-1PSPM		1			
009	231026-3	COMPRESSION SPRING 4		1			
010	213275-4	O RING 18		1	*		
010	213218-6	O RING 16		1			
010-1	213218-6	O RING 16	<	1			
011	458079-9	SWITCH COVER		1			
012	620750-7	SUB CONTROLLER		1			
013	265995-6	TAPPING SCREW 4X18		3			
014	183H70-3	HANDLE SET		1			
C10	810486-8	CAUTION LABEL		1			
014		INC. 2					
015	451037-4	SWITCH BUTTON		1			
016	451000-7	LEAD COVER HOLDER		1			
017	265995-6	TAPPING SCREW 4X18		1			
018	265995-6	TAPPING SCREW 4X18		2			
019	457933-4	REAR COVER		1			
020	620742-6	POWER SUPPLY CIRCUIT		1			
021	620728-0	CONTROLLER		1	*		
021-1	620H42-2	CONTROLLER	<	1			
022	813T74-0	INDICATION LABEL		1			
023	643874-2	TERMINAL		2			
024	911948-0	PAN HEAD SCREW M6X80 WITH WR		4			
025	853T07-3	DLS111 NAME PLATE		1			
026	457906-7	MOTOR HOUSING		1			
027	265995-6	TAPPING SCREW 4X18		3			
028	911273-9	PAN HEAD SCREW M5X50		2			
029	183H65-6	BATTERY HOUSING SET		1			
C10	263005-3	RUBBER PIN 6		4			
029		INC. 30					
030	183H65-6	BATTERY HOUSING SET		1			

C10	263005-3	RUBBER PIN 6		4			
030		INC. 29					
031	629282-1	STATOR		1	*		
031-1	629B80-5	STATOR	S	1			
032	457934-2	BAFFLE PLATE		1	*		
032-1	413E35-6	BAFFLE PLATE	O	1			
033	265995-6	TAPPING SCREW 4X18		2			
034	211021-9	BALL BEARING 607LLB		1			
035	519454-5	ROTOR ASS'Y		1	*		
035		INC. 34			*		
035-1	519454-5	ROTOR ASS'Y	O	1			
035-1		INC. 34					
036	319591-3	MOTOR BRACKET		1			
037	961057-5	RETAINING RING S-17		1			
038	211275-8	BALL BEARING 6003DDW		1			
039	922331-6	HEX. SOCKET HEAD BOLT M6X20		1			
040	253804-1	FLAT WASHER 6		1			
041	257163-5	RING 6		1			
042	457704-9	DUST NOZZLE		1	*		
042-1	459250-8	DUST NOZZLE	S	1			
043	853T14-6	DLS111 SERIAL NO. LABEL		1			
044	266026-4	TAPPING SCREW BIND CT 4X12		1			
045	251554-2	THUMB SCREW M6X40		1			
046	922332-4	HEX. SOCKET HEAD BOLT M6X20		1			
047	457667-9	LOGO PLATE		1			
048	961018-5	STOP RING E-5		1			
049	251547-9	HEX.SOCKET HEAD BOLT M8X25		1			
050	922226-3	HEX. SOCKET HEAD BOLT M5X18		1			
051	266034-5	TAPPING SCREW CT 4X16		3			
052	144529-7	LINK PLATE COMPLETE		1			
053	257163-5	RING 6		1			
054	253804-1	FLAT WASHER 6		1			
055	262001-8	URETHANE RING 5		1			
056	942151-2	SPRING WASHER 6		1	*		
056-1	253428-3	SPRING WASHER 6	O	1			
057	257785-1	SLEEVE 6		1			
058	266321-2	H.S.SET SCREW(FLAT POINT)M6X16		1			
059	911114-9	PAN HEAD SCREW M4X10		2			
060	232412-1	TORSION SPRING 11		1			
061	457764-1	DUST GUIDE PLATE		1			
062	161647-6	GUARD HOLDER		1			
063	231928-3	RING SPRING 8		1			
064	251544-5	SHOULDER HEX. BOLT M4		1			
065	144774-4	BLADE CASE COMPLETE		1			
C10	263005-3	RUBBER PIN 6		3			
C20	810064-4	LASER BEAM CAUTION LABEL		1			
C30	810354-5	LASER BEAM LABEL		1			
066	231240-1	COMPRESSION SPRING 7		1			
067	256633-1	PIN 6		1			
068	457659-8	LEAD COVER		1			
069	265028-7	+ PAN HEAD SCREW M4X11		1	*		

069-1	265D50-8	+PAN HEAD SCREW M4X11	O	1	*		
069-2	265028-7	+ PAN HEAD SCREW M4X11	O	1			
070	422155-5	GUARD		1			
071	347215-1	GUARD PLATE		1			
072	266283-4	HEX. SOCKET HEX. BOLT M8X20		1			
073	266020-6	TAPPING SCREW 4X12		1			
074	961052-5	RETAINING RING (EXT) S-12		1			
075	210005-4	BALL BEARING 608DDW		1			
076	261104-5	RUBBER WASHER 12		1			
077	253744-3	FLAT WASHER 12		1			
078	254001-2	WOODRUFF KEY 4		1			
079	227550-2	SPIRAL BEVEL GEAR 32		1			
080	253744-3	FLAT WASHER 12		1			
081	253313-0	THIN WASHER 14		1			
082	451002-3	GREASE HOLDER		1			
083	266026-4	TAPPING SCREW BIND CT 4X12		2			
084	325643-0	GEAR SHAFT		1			
085	216024-8	STEEL BALL 4		1			
086	227702-5	HELICAL GEAR 27		1			
087	227701-7	HELICAL GEAR 14		1			
088	210067-2	BALL BEARING 6000ZZ		1			
089	442147-8	GASKET		1			
090	961055-9	RETAINING RING S-15		1			
091	210005-4	BALL BEARING 608DDW		1			
092	911223-4	PAN HEAD SCREW M5X16		3			
093	227703-3	HELICAL GEAR 28		1			
094	267010-2	FLAT WASHER 5		1			
095	210005-4	BALL BEARING 608DDW		1			
096	158957-0	BEARING BOX COMPLETE		1			
C10	263002-9	RUBBER PIN 4		1			
097	285847-5	BEARING RETAINER 14-23		1			
098	931202-6	HEX. NUT M5		1			
099	942101-7	SPRING WASHER 5		1	*		
099-1	253427-5	SPRING WASHER 5	O	1			
100	325644-8	SPINDLE		1			
101	211236-8	BALL BEARING 6002DDW		1			
102	285732-2	BEARING RETAINER 51		1			
103	224431-1	INNER FLANGE 53		1			
104	224432-9	OUTER FLANGE 53		1			
105	257262-3	RING 16		1			
106	265034-2	+ COUNTERSUNK HEAD SCREW M5X16		2	*		
106-1	265D49-3	+COUNTERSUNK HEAD SCREW M 5X16	O	2	*		
106-2	265034-2	+ COUNTERSUNK HEAD SCREW M5X16	O	2			
107	266755-9	HEX.SOCKET HEAD BOLT M10X20		1			
108	941051-3	FLAT WASHER 4		2			
109	266020-6	TAPPING SCREW 4X12		2			
110	418104-8	LENS		1			
111	419378-4	BLOCK B		1			

112	911003-8	PAN HEAD SCREW M3X6		2			
113	231664-1	TORSION SPRING 9		1			
114	266318-1	H.S.SET SCREW(FLAT POINT)M4X6		1			
115	266306-8	SHOULDER SCREW M5		1			
116	419379-2	BLOCK C		1			
117	233471-8	COMPRESSION SPRING 6		1			
118	638651-5	LASER CIRCUIT COMPLETE		1			
119	231664-1	TORSION SPRING 9		1			
120	266318-1	H.S.SET SCREW(FLAT POINT)M4X6		1			
121	266229-0	H.S.SET SCREW(CUP POINT)M5X8		2			
122	457660-3	LASER COVER		1			
123	266034-5	TAPPING SCREW CT 4X16		2			
124	457664-5	PROTECTOR		1			
125	265753-0	THUMB SCREW M5X24		1			
126	253807-5	FLAT WASHER 5		1			
127	424193-3	ROLLER		2			
128	266385-6	TAPPING SCREW 4X14		3			
129	457499-4	SEAFTY COVER B		1			
130	266385-6	TAPPING SCREW 4X14		1			
131	347213-5	CENTER PLATE		1			
132	231634-0	TORSION SPRING 45		1			
133	424190-9	CUSHION		1			
134	347214-3	CENTER COVER		1			
135	265985-9	HEX.SOCKET HEAD BOLT M6		1			
136	253932-2	WAVE WASHER 10		1			
137	210168-6	BALL BEARING 6805DDW		1			
138	457498-6	SAFETY COVER A		1	*		
138-1	458437-9	SAFETY COVER A	S	1			
139	126751-8	DUST NOZZLE ASSEMBLY		1	*		
139		INC. 140-144,147,148			*		
139-1	127427-0	DUST NOZZLE ASSEMBLY	S	1	*		
C10	458939-5	BUTTON A	S	1	*		
C20	232485-4	COMPRESSION SPRING 5	S	1	*		
139-1		INC. 140-144,147,148			*		
139-2	127427-0	DUST NOZZLE ASSEMBLY	O	1			
C10	458939-5	BUTTON A		1			
C20	232485-4	COMPRESSION SPRING 5		1			
139-2		INC. 141-144,147					
140	265995-6	TAPPING SCREW 4X18		3	*		
141	183H71-1	HOSE CONNECTOR SET		1	*		
141		INC. 148			*		
141-1	413J67-3	HOSE CONNECTOR	S	1			
142	245041-1	HOSE 28-0.45		1			
143	457672-6	SLEEVE		1			
144	457673-4	STOPPER		1			
147	458198-1	HOSE JOINT		1	*		
147-1	459249-3	HOSE JOINT	S	1			
148	183H71-1	HOSE CONNECTOR SET		1	*		
148		INC. 141			*		
149	266034-5	TAPPING SCREW CT 4X16		3			

150	457665-3	SLEEVE 17		2		
152	233537-4	TORSION SPRING 35		1		
153	251267-5	+ PAN HEAD SCREW M6		1		
154	253948-7	WAVE WASHER 8		1		
155	253835-0	FLAT WASHER 8		1		
156	347221-6	STOPPER ARM		1		
157	347222-4	FRONT ARM PLATE		1		
158	262076-7	FELT RING 30		2		
159	326994-4	ROD 16		1		
160	271437-0	KNOB 22		1		
161	961013-5	STOP RING E-7		1		
162	266034-5	TAPPING SCREW CT 4X16		4		
163	144531-0	FRONT ARM COMPLETE		1		
C10	263005-3	RUBBER PIN 6		2		
164	233151-6	COMPRESSION SPRING 4		1		
165	256364-2	PIN 4		1		
166	232384-0	COMPRESSION SPRING 10		1		
167	326977-4	STOPPER PIN		1		
168	457653-0	ARM COVER		1		
169	144658-6	HOLDER COMPLETE		1		
C10	812X89-8	INDICATION LABEL		1		
170	265008-3	+ FLAT HEAD SCREW M5		1		
171	222191-9	PULLEY 17-19.3		1		
172	210167-8	BALL BEARING 6900LLB		1		
173	267804-5	WAVE WASHER 15		1		
174	326975-8	SHAFT		1		
175	210167-8	BALL BEARING 6900LLB		1		
177	913416-9	SET SCREW M8X12		2		
178	416536-3	WRENCH HOLDER		1		
179	266026-4	TAPPING SCREW BIND CT 4X12		1		
180	951107-4	SPRING PIN 4-14		2		
181	273016-0	GRIP 50 B		1		
182	265919-2	HEX. SOCKET HEAD BOLT M5X30		1		
183	251545-3	SHOULDER HEX. BOLT M6		1		
184	144657-8	STOPPER LEVER COMPLETE		1		
C10	812X87-2	INDICATION LABEL		1		
185	253948-7	WAVE WASHER 8		1		
186	253835-0	FLAT WASHER 8		1		
187	251267-5	+ PAN HEAD SCREW M6		1		
188	326987-1	PIN 9-365		1		
189	253194-2	FLAT WASHER 5		1		
190	257426-9	SLEEVE 5		1		
191	253165-9	FLAT WASHER 8		1		
192	457666-1	SLEEVE 20		1		
193	326977-4	STOPPER PIN		1		
194	222192-7	PULLEY 17-87.8		1		
195	326980-5	HEX.LOCK NUT M10-19		1		
196	225101-5	SYNCHRO BELT 15-756		1		
197	232384-0	COMPRESSION SPRING 10		1		
198	253388-9	FLAT WASHER 10		1		
199	252244-0	HEX.LOCK NUT M10-17		1		
200	253024-7	FLAT WASHER 10		1		

202	216413-7	THRUST NEEDLE CAGE 1024		1			
203	253024-7	FLAT WASHER 10		1			
204	216413-7	THRUST NEEDLE CAGE 1024		1			
205	961013-5	STOP RING E-7		1			
206	271437-0	KNOB 22		1			
207	253024-7	FLAT WASHER 10		1			
208	144530-2	ARM COMPLETE		1			
C10	812X88-0	INDICATION LABEL		1			
209	251547-9	HEX.SOCKET HEAD BOLT M8X25		1			
210	457871-0	INDICATION PLATE R		1			
211	266026-4	TAPPING SCREW BIND CT 4X12		1			
212	266034-5	TAPPING SCREW CT 4X16		4			
213	415208-7	RELEASE BUTTON		1			
214	233031-6	COMPRESSION SPRING 12		1			
215	457654-8	DUST GUIDE HOLDER		1			
216	457870-2	INDICATION PLATE L		1			
217	266026-4	TAPPING SCREW BIND CT 4X12		1			
218	253389-7	WASHER 94		1			
219	422156-3	DUST GUIDE		1			
220	319593-9	STOPPER		1			
221	231646-3	TORSION SPRING 14		1			
222	253744-3	FLAT WASHER 12		1			
223	961052-5	RETAINING RING (EXT) S-12		1			
224	266026-4	TAPPING SCREW BIND CT 4X12		2			
225	457668-7	HOLDER		2			
226	144650-2	UPPER FENCE R COMPLETE		1			
C10	810503-4	CAUTION LABEL		1			
227	144646-3	UPPER FENCE L COMPLETE		1			
C10	810503-4	CAUTION LABEL		1			
228	922458-2	H.S.H.BOLT M8X35 WITH WR		4			
229	251887-5	SCREW M6X10		2			
230	251561-5	H.SOCKET HEAD SET SCREW M10 X12		2			
231	319565-4	GUIDE FENCE		1			
232	266026-4	TAPPING SCREW BIND CT 4X12		4			
233	451013-8	KERF BOARD		2			
235	265442-7	HEX. BOLT M8X40		1			
236	253852-0	FLAT WASHER 8		2			
237	216413-7	THRUST NEEDLE CAGE 1024		1			
239	812X86-4	BEVEL SCALE LABEL		1			
240	251547-9	HEX.SOCKET HEAD BOLT M8X25		1			
241	251547-9	HEX.SOCKET HEAD BOLT M8X25		1			
243	813L22-1	CAUTION LABEL		2			
244	266026-4	TAPPING SCREW BIND CT 4X12		2			
245	457702-3	INDICATION PLATE		2			
246	326970-8	LOCK PIN 8		1			
247	234122-6	COMPRESSION SPRING 6		1			
249	457657-2	LEVER 25		1			
250	253804-1	FLAT WASHER 6		1			
251	961018-5	STOP RING E-5		2			
252	144654-4	TURN BASE COMPLETE		1			
252		INC. 239,243,253					

253	812X85-6	CAUTION LABEL		1			
254	326973-2	ROD 12		1			
255	286039-9	CAP		2			
256	326976-6	CENTER SHAFT		1			
257	911113-1	PAN HEAD SCREW M4X10 WITH WR		2			
258	231325-3	COMPRESSION SPRING 6		1			
259	310803-7	TURN STOPPER		1			
260	347217-7	LEVER PLATE		1			
261	256186-0	PIN 5		1			
262	911231-5	PAN HEAD SCREW M5X20		2			
263	347219-3	STOPPER HOLDER		1			
264	326971-6	LOCK ROD		1			
265	457656-4	LOCK LEVER		1			
266	326969-3	LOCK PIN 6		1			
267	256158-5	PIN 3		1			
268	231325-3	COMPRESSION SPRING 6		1			
269	347237-1	CAM PLATE		1			
270	319592-1	PIN HOLDER		1			
271	922231-0	HEX. SOCKET HEAD BOLT M5X20		2			
272	347216-9	LOCK PLATE		1			
274	326972-4	ROD 6		1			
275	961011-9	STOP RING E-4		1			
276	257425-1	RING 5		2			
277	253194-2	FLAT WASHER 5		2			
278	922231-0	HEX. SOCKET HEAD BOLT M5X20		2			
279	911113-1	PAN HEAD SCREW M4X10 WITH WR		1			
280	144656-0	LEVER 25 COMPLETE		1			
C10	263005-3	RUBBER PIN 6		1			
281	911008-8	PAN HEAD SCREW M3X8		1			
282	345272-3	LOCK LEVER PLATE		1			
283	273015-2	GRIP 50A		1			
284	266026-4	TAPPING SCREW BIND CT 4X12		2			
285	457655-6	SLIDE PLATE		1			
286	347223-2	MITER SCALE PLATE		1	*		
286-1	347412-9	MITER SCALE PLATE	<	1			
287	251546-1	+ PAN HEAD SCREW M5		4			
288	347218-5	MITER LOCK PLATE		1			
289	265786-5	SCREW M5X16		2			
290	319560-4	BASE		1	*		
290-1	310891-4	BASE	O	1	*		
290-2	310891-4	BASE	S	1			
291	421845-7	FOOT		4			
292	267195-4	FLAT WASHER 4		4			
293	266026-4	TAPPING SCREW BIND CT 4X12		4			
294	326978-2	HOLDER 200		2	*		
294-1	327095-1	HOLDER 200	S	2			
295	961015-1	STOP RING E-9		2			
296	266026-4	TAPPING SCREW BIND CT 4X12		1			
297	266318-1	H.S.SET SCREW(FLAT POINT)M4X 6		1			

298	931102-0	HEX. NUT M4		1	*		
299	620L22-2	CONTROLLER B	S	1			
300	638A38-7	LEAD UNIT	S	1			
301	652119-7	PAN HEAD SCREW M2X6	S	6			
A01	122852-0	DUST BAG ASS'Y		1			
C10	410602-8	FASTENER		1			
A02	126617-2	WISE ASS'Y		1			
A03	762001-3	TRIANGULAR RULE		1			
A04	783208-8	HEX. WRENCH 2.5		1			
A05	198897-0	WIRELESS UNIT SET		1	*		
A05-1	198900-7	WIRELESS UNIT SET		1	*		
A05-2	198900-7	WIRELESS UNIT SET	<	1	*		
A05-3	198900-7	WIRELESS UNIT SET	<	1	*		
A05-4	198900-7	WIRELESS UNIT SET	O	1	*		
A05-5	198900-7	WIRELESS UNIT SET	<	1			
A06	B-14261	T.C.T. SAW BLADE 260X30X40T		1	*		
A06-1	B-64624	TCT BLADE260X45T WOOD EFFIC UT	O	1			
A07	781044-6	HEX. WRENCH 6		1			
F02	192628-9	CROWN MOLDING STOPPER (L.R)		1			
F04	198688-9	STAND SET		1			
F05-1	198687-1	STAND SET	<	1			
F08	191C01-8	SUB BASE ASSEMBLY SET		1			

Please state Parts No. when your order.

Print Date 02/10/2024