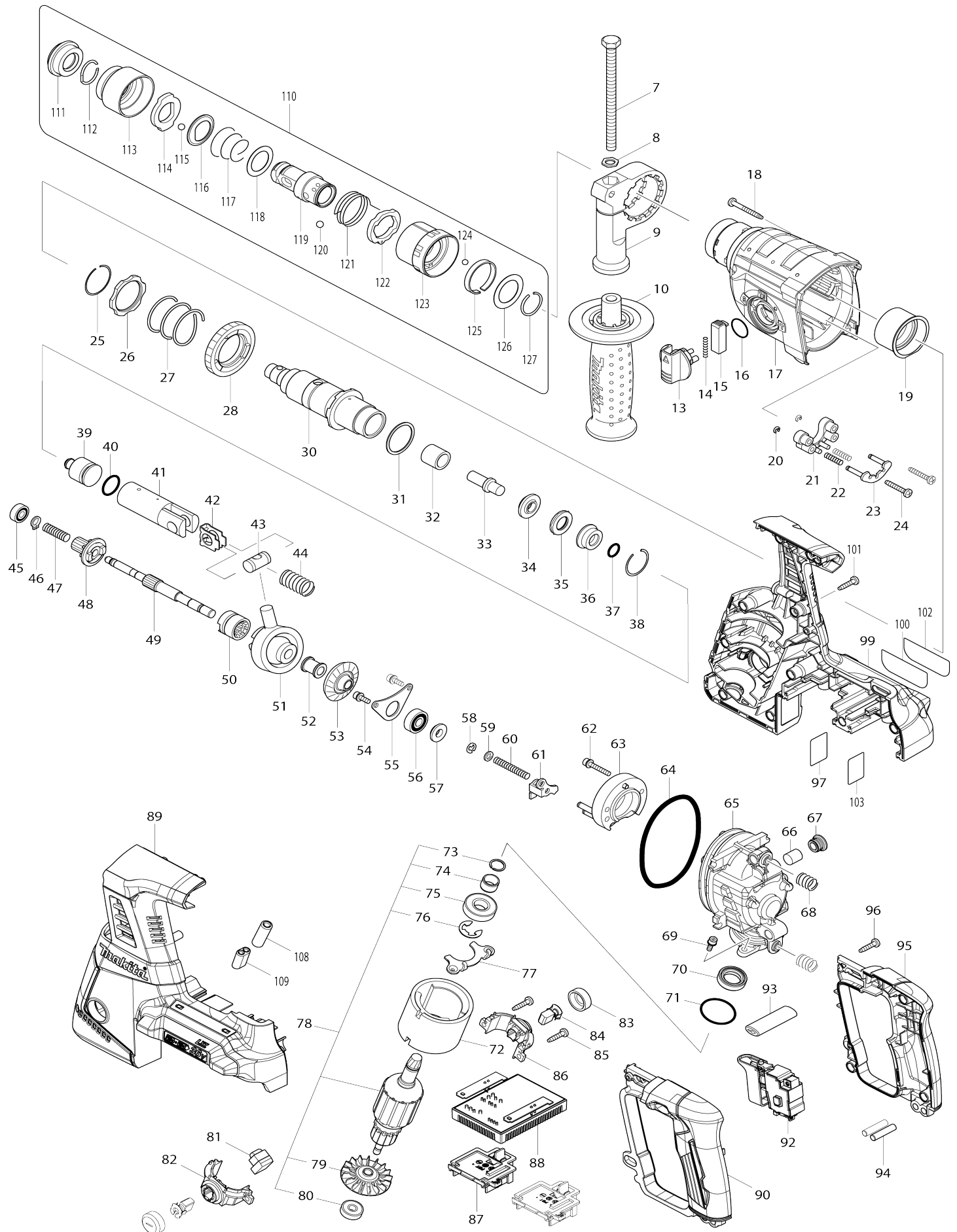


Model No.DHR264 26MM CRDLS COMBINATION HAMMER



Model No.DHR264 26MM CRDLS COMBINATION HAMMER

Item No.	Parts No.	Description	Interchangability	Q'ty	New/Old	Note1	Note2
007	921923-8	HEX. BOLT M8X120		1			
008	345280-4	HEX. WASHER		1			
009	417630-4	GRIP BASE		1			
010	158057-6	GRIP 36 COMPLETE		1			
013	450980-4	CHANGE LEVER		1			
014	233279-0	COMPRESSION SPRING 4		1			
015	453706-3	LOCK BUTTON		1			
016	213278-8	O RING 17		1			
017	158945-7	GEAR HOUSING COMPLETE		1			
C10	213345-9	OIL SEAL 25		1			
018	266560-4	TAPPING SCREW 4X40		4			
019	153290-5	NEEDLE BEARING COMPLETE		1			
020	961017-7	STOP RING E-3		2			
021	417796-0	GUIDE BASE		1			
022	233344-5	COMPRESSION SPRING 4		2			
023	163430-7	LOCK PLATE COMPLETE		1			
024	266374-1	TAPPING SCREW 4X25		2			
025	233929-7	RING SPRING 29		1			
026	267460-1	WASHER 31		1			
027	233401-9	COMPRESSION SPRING 32		1			
028	227109-5	SPUR GEAR 51		1			
030	158307-9	TOOL HOLDER GUIDE COMPLETE		1			
031	267229-3	FLAT WASHER 28		1			
032	331769-8	SLEEVE 9		1			
033	324796-2	IMPACT BOLT		1			
034	324402-9	RING 10		1			
035	421955-0	CUSHION RING 13		1			
036	324216-6	O RING CASE		1			
037	213073-6	O RING 9		1			
038	233917-4	RING SPRING 28		1			
039	326404-1	STRIKER		1			
040	213227-5	O RING 16		1			
041	318132-2	PISTON CYLINDER		1			
042	346036-8	GUIDE PLATE		1			
043	324215-8	PISTON JOINT		1			
044	234098-7	COMPRESSION SPRING 14		1			
045	211012-0	BALL BEARING 606ZZ		1			
046	961003-8	RETAINING RING S-7		1			
047	233343-7	COMPRESSION SPRING 7		1			
048	227179-4	SPUR GEAR 10		1			
049	325976-3	CAM SHAFT		1			
050	331992-5	CLUTCH CAM		1			
051	219014-0	SWASH BEARING 10		1	*		
051-1	219021-3	SWASH BEARING 10	O	1			
052	325640-6	SLEEVE 9		1			
053	227549-7	SPIRAL BEVEL GEAR 26		1			
054	266273-7	HEX. SOCKET HEAD BOLT M4X12		2			

055	346038-4	BEARING RETAINER B		1			
056	211032-4	BALL BEARING 608ZZ		1			
057	324212-4	RING 8		1			
058	961011-9	STOP RING E-4		1			
059	941102-2	FLAT WASHER 5		1			
060	233342-9	COMPRESSION SPRING 6		1			
061	345220-2	CHANGE PLATE		1			
062	922148-7	HEX. SOCKET HEAD BOLT M4X25		2			
063	158944-9	INNER SUPPORT COMPLETE		1			
064	213728-3	O-RING 68		1			
065	318392-6	INNER HOUSING		1			
066	443143-9	FILTER		1			
067	424185-2	CAP		1			
068	234097-9	COMPRESSION SPRING 10		2			
069	266273-7	HEX. SOCKET HEAD BOLT M4X12		2			
070	213231-4	OIL SEAL 15		1			
071	213437-4	O RING 28		1			
072	632828-4	YOKE UNIT		1			
073	961082-6	RETAINING RING WR12		1			
074	331596-3	SLEEVE 12		1			
075	211131-2	BALL BEARING 6001DDW		1			
076	961016-9	STOP RING E-10		1			
077	346037-6	BEARING RETAINER A		1			
078	519235-7	ARMATURE ASS'Y 36V		1			
078		INC. 73-76,79,80					
079	240037-7	FAN 44		1			
080	210022-4	BALL BEARING 626DDW		1			
081	620281-6	LIGHT CIRCUIT		1			
082	644507-2	BRUSH HOLDER		1			
083	643829-7	HOLDER CAP		2			
084	194928-3	CARBON BRUSH CB-442		1	*		
084-1	195023-2	CARBON BRUSH SET CB-442	O	1			
085	266326-2	TAPPING SCREW 4X18		2			
086	644508-0	BRUSH HOLDER		1			
087	644808-8	TERMINAL		2			
088	620280-8	CONTROLLER		1			
089	187833-1	HOUSING SET		1			
C10	263005-3	RUBBER PIN 6		8			
C20	263025-7	RUBBER PIN 4		4			
C30	346783-1	PLATE		4			
C40	803F15-0	INDICATION LABEL		1			
089		INC. 99					
090	187771-7	HANDLE SET		1			
090		INC. 95					
092	650721-0	SWITCH		1			
093	454980-6	F/R CHANGE LEVER		1			
094	256261-2	PIN 6		2			
095	187771-7	HANDLE SET		1			
095		INC. 90					
096	266326-2	TAPPING SCREW 4X18		4			
097	815K38-6	DHR264 SERIAL NO. LABEL		1			

099	187833-1	HOUSING SET		1			
C10	263005-3	RUBBER PIN 6		8			
C20	263025-7	RUBBER PIN 4		4			
C30	346783-1	PLATE		4			
C40	803F15-0	INDICATION LABEL		1			
099		INC. 89					
100	815K31-0	DHR264 NAME PLATE		1			
101	266326-2	TAPPING SCREW 4X18		10			
102	803F14-2	CLEAR LABEL		1	*		
103	893072-0	CLEAR LABEL		1	*		
108	688165-4	LINE FILTER		1			
109	688172-7	LINE FILTER		1	*		
109-1	688172-7	LINE FILTER	O	1			
110	194080-7	TOOL HOLDER SET		1			
110		INC. 111-127					
111	286263-4	CAP 35		1			
112	233940-9	RING SPRING 19		1			
113	418217-5	CHUCK COVER		1			
114	345333-9	STOPPER		1			
115	216022-2	STEEL BALL 7.0		1			
116	345187-4	GUIDE WASHER		1			
117	233916-6	CONICAL COMP. SPRING 21-29		1			
118	267279-8	FLAT WASHER 21		1			
119	324355-2	TOOL HOLDER		1			
120	216013-3	STEEL BALL 6		2			
121	231669-1	TORSION SPRING 31		1			
122	345334-7	CHANGE RING		1			
123	418218-3	CHANGE COVER		1			
124	216018-3	STEEL BALL 5.0		1			
125	345335-5	LEAF SPRING		1			
126	267270-6	FLAT WASHER 24		1			
127	233924-7	RING SPRING 21		1			
A01	194683-7	GREASE VESSEL SET		1	*		
A01-1	198993-4	GREASE VESSEL SET	<	1			
A02	324219-0	DEPTH GAUGE		1			
A03	443122-7	CLOTH		1	*		
A04	194079-2	DRILL CHUCK SET		1	*		
A04-1	194079-2	DRILL CHUCK SET	<	1	*		
A04-2	194079-2	DRILL CHUCK SET	O	1			
A05	***DC18RD	DC18RD TWO PORT FAST CHARG ER		1			
A06-1	196399-0	BATTERY BL1840 SET		2	*		
A06-2	197265-4	BATTERY BL1840B SET	<	2	*		
A06-3	197265-4	BATTERY BL1840B SET	O	2			
A07	821552-6	CONNECTOR PLASTIC CASE (TYP E4)		1			
C10	453974-8	LATCH		4			
A08	838257-1	INNER TRAY		1			
A09	807D25-7	DHR264PM2J INDICATION LABEL		1			
A10	807E95-2	DHR264PM2J PLASTIC CASE LABE L		2	*		
A10-1	807D26-5	DHR264PM2J PLASTIC CASE LABE L	O	2			

B01	195189-8	HAMMER SERVICE KIT		1			
C10	195127-0	OIL VESSEL SET		2			
B01		INC. 35,37,38,40,84,111,115					
F05	192349-3	JOINT 25		1			
F38-3	197606-4	BATTERY BL1830B SET (2PIECES)	O	1	*		
F39-3	197600-6	BATTERY BL1830B SET	O	1			
F40-4	197599-5	BATTERY BL1830B SET	O	1			
G12	1914X3-8	DUST EXTRACTION PAD SET		1			

Please state Parts No. when your order.

Print Date 12/02/2024