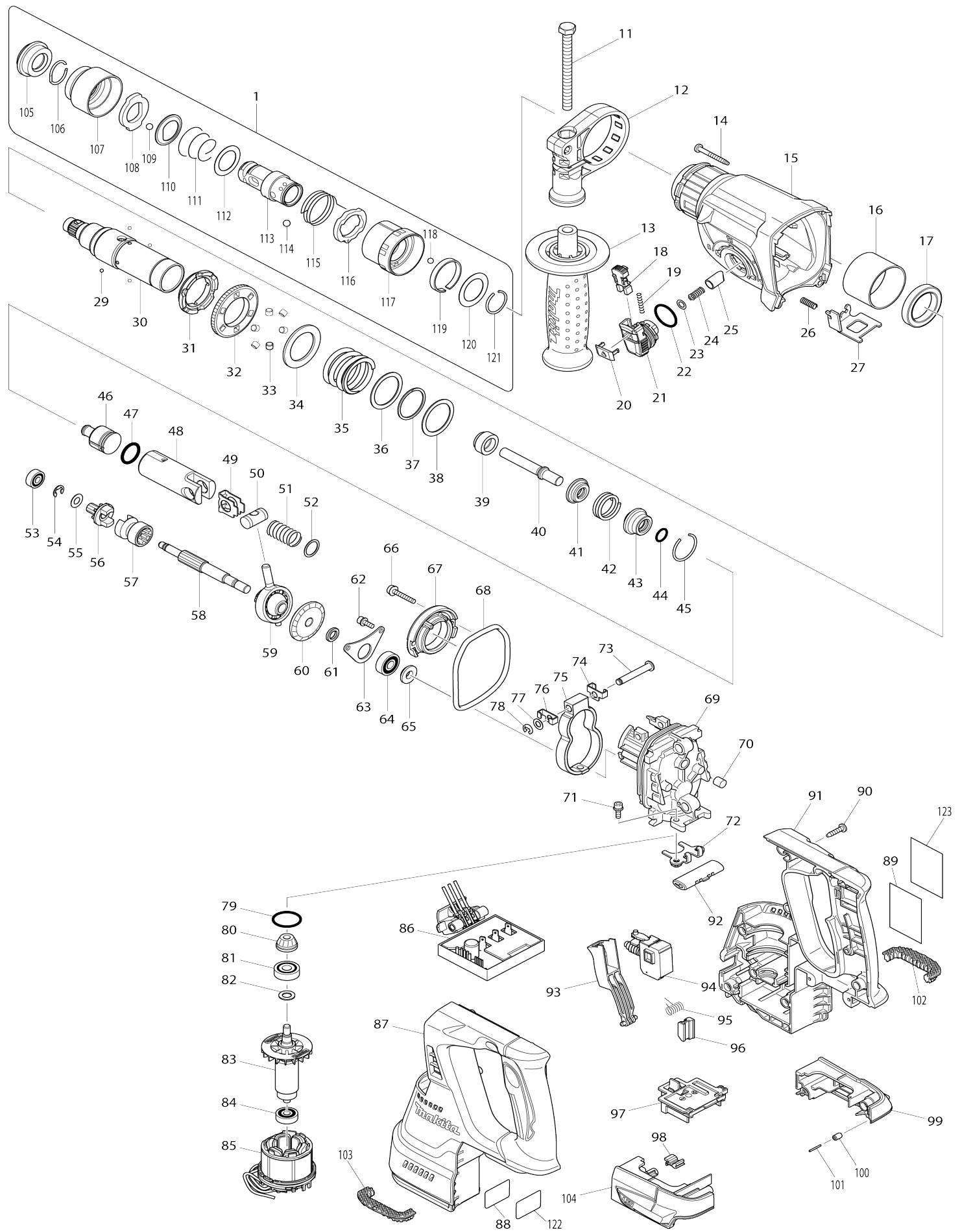


Model No.DHR243 24MM CORDLESS COMBI. HAMMER



Model No.DHR243 24MM CORDLESS COMBI. HAMMER

Item No.	Parts No.	Description	Interchangability	Q'ty	New/Old	Note1	Note2
001	194080-7	TOOL HOLDER SET		1			
001		INC. 105-121					
011	266745-2	HEX.BOLT M8X90		1			
012	453129-5	GRIP BASE		1			
013	158057-6	GRIP 36 COMPLETE		1			
014	266351-3	TAPPING SCREW 4X35		4			
014	266351-3	TAPPING SCREW 4X35		4	*		
014-1	265B69-5	TAPPING SCREW 4X35	O	4			
015	141229-0	GEAR HOUSING COMPLETE		1	*		
C10	213345-9	OIL SEAL 25		1	*		
C20	890903-4	INDICATION LABEL		1	*		
015-1	144354-6	GEAR HOUSING COMPLETE	<	1			
C10	213345-9	OIL SEAL 25		1			
C20	810X86-8	INDICATION LABEL	<	1			
015-1	144354-6	GEAR HOUSING COMPLETE		1			
C10	213345-9	OIL SEAL 25		1			
C20	810X86-8	INDICATION LABEL		1			
016	331890-3	CUP SLEEVE		1			
017	211294-4	BALL BEARING 6806LLU		1			
018	454112-5	LOCK BUTTON		1			
019	234264-6	COMPRESSION SPRING 3		1			
020	453131-8	CHANGE LEVER COVER		1			
021	453125-3	CHANGE LEVER		1			
022	213381-5	O RING 21		1			
023	253308-3	THIN WASHER 6		1			
024	234147-0	COMPRESSION SPRING 5		1			
025	325785-0	PUSH CORN		1	*		
025-1	326850-8	PUSH CORN	S	1			
025-1	326850-8	PUSH CORN		1			
026	233360-7	COMPRESSION SPRING 4		1			
027	346537-6	LOCK PLATE		1			
029	216019-1	STEEL BALL 3		4			
029	216019-1	STEEL BALL 3		4	*		
029-1	216061-2	STEEL BALL 3	O	4			
030	140266-1	TOOL HOLDERGUIDE COMPLETE		1			
031	313149-0	DRIVING FLANGE		1	*		
031-1	332139-4	DRIVING FLANGE	S	1			
031-1	332139-4	DRIVING FLANGE		1			
032	227232-6	SPUR GEAR 51		1	*		
032-1	227360-7	SPUR GEAR 51	S	1			
032-1	227360-7	SPUR GEAR 51		1			
033	268226-2	PIN 6		6	*		
034	267414-8	FLAT WASHER 30		1	*		
035	234148-8	COMPRESSION SPRING 31		1			
036	267153-0	FLAT WASHER 30		1			
037	257932-4	SPIRO LOCK WASHER 30		1			
038	267153-0	FLAT WASHER 30		1			

039	325783-4	SLEEVE 9B		1			
040	325791-5	IMPACT BOLT B		1			
041	325792-3	WASHER 10		1			
042	234149-6	COMPRESSION SPRING 20		1			
043	325793-1	O-RING CASE B		1			
044	213073-6	O RING 9		1			
045	233979-2	RING SPRING 28		1			
046	326139-4	STRIKER		1			
047	213258-4	O RING 17.5		1			
048	310345-1	PISTON CYLINDER		1			
049	346036-8	GUIDE PLATE		1			
050	324215-8	PISTON JOINT		1			
051	234098-7	COMPRESSION SPRING 14		1			
052	267447-3	FLAT WASHER 14		1			
053	211012-0	BALL BEARING 606ZZ		1			
054	257336-0	STOP RING EXT U-6		1			
055	253186-1	FLAT WASHER 7		1			
056	227231-8	SPUR GEAR 10		1			
057	331814-9	CLUTCH CAM A		1	*		
057-1	326849-3	CLUTCH CAM A	S	1			
057-1	326849-3	CLUTCH CAM A		1			
058	326140-9	CAM SHAFT		1			
059	219020-5	SWASH BEARING 10		1	*		
059	219020-5	SWASH BEARING 10		1			
059-1	219040-9	SWASH BEARING 10	O	1			
060	227588-7	SPIRAL BEVEL GEAR 32		1			
061	257323-9	RING 8		1			
062	922118-6	HEX. SOCKET HEAD BOLT M4X12		2			
063	346038-4	BEARING RETAINER B		1			
064	211032-4	BALL BEARING 608ZZ		1			
065	324212-4	RING 8		1			
066	922147-9	HEX. SOCKET HEAD BOLT M4X25		2			
067	141230-5	INNER SUPPORT COMPLETE		1			
068	213767-3	O-RING 75		1			
069	318810-4	INNER HOUSING		1			
070	443153-6	FELT		1			
071	922118-6	HEX. SOCKET HEAD BOLT M4X12		2			
072	346536-8	BEARING RETAINER A		1			
073	256536-9	FLAT FILLISTER HD PIN 6		1			
074	346538-4	WEIGHT HOLDER GUIDE		1			
075	313224-2	COUNTER WEIGHT		1			
076	346538-4	WEIGHT HOLDER GUIDE		1			
077	253726-5	FLAT WASHER 6		1			
078	961018-5	STOP RING E-5		1			
079	213008-7	O RING 22.4		1			
080	141458-5	SPIRAL BEVEL GEAR 11 COMPLETE		1			
081	210024-0	BALL BEARING 608LLU		1			
082	253835-0	FLAT WASHER 8		1			
083	619293-4	ROTOR		1	*		
083-1	619737-4	ROTOR	<	1			
083-1		INC. 80-82,84					

084	210022-4	BALL BEARING 626DDW		1			
085	629922-1	STATOR		1	*		
085-1	529922-0	STATOR ASS'Y	<	1	*		
085-2	529187-4	STATOR ASS'Y	S	1			
085-2	529187-4	STATOR ASS'Y		1			
086	620241-8	CONTROLLER		1	*		
086-1	620G68-8	CONTROLLER	<	1			
087	187687-6	HOUSING SET		1	*		
087		INC. 91			*		
087-1	183A34-5	HOUSING SET	<	1	*		
087-1		INC. 91			*		
087-1 V	183A34-5	HOUSING SET		1	*		
087-1 V		INC. 91			*		
087-2	183C02-0	HOUSING SET	S	1	*		
087-2		INC. 91			*		
087-2 W	183C02-0	HOUSING SET		1	*		
087-2 W		INC. 91			*		
087-3	183C02-0	HOUSING SET	O	1			
087-3		INC. 91					
087-3 X	183F48-4	HOUSING SET		1			
087-3 X		INC. 91					
088	815B50-2	DHR243 SERIAL NO. LABEL		1			
089	815B44-7	DHR243 NAME PLATE		1			
090	266326-2	TAPPING SCREW 4X18		10	*		
090-1	266326-2	TAPPING SCREW 4X18	O	10			
090-1	266326-2	TAPPING SCREW 4X18	O	10	*		
090-1 X	266326-2	TAPPING SCREW 4X18		10	*		
090-2	265B67-9	TAPPING SCREW 4X18	O	10			
091	187687-6	HOUSING SET		1	*		
091		INC. 87			*		
091-1	183A34-5	HOUSING SET	<	1	*		
091-1		INC. 87			*		
091-1 V	183A34-5	HOUSING SET		1	*		
091-1 V		INC. 87			*		
091-2	183C02-0	HOUSING SET	S	1	*		
091-2		INC. 87			*		
091-2 W	183C02-0	HOUSING SET		1	*		
091-2 W		INC. 87			*		
091-3	183C02-0	HOUSING SET	O	1			
091-3		INC. 87					
091-3 X	183F48-4	HOUSING SET		1			
091-3 X		INC. 87					
092	453124-5	F/R CHANGE LEVER		1			

093	453123-7	SWITCH LEVER		1			
094	650709-0	SWITCH C3JW-1A-P		1			
095	233598-4	TORSION SPRING 6		1			
096	313226-8	OPENER		1			
097	644808-8	TERMINAL		1			
098	424476-1	CUSHION		1			
099	187377-1	BATTERY HOUSING SET		1			
C10	263005-3	RUBBER PIN 6		2			
099		INC. 104					
099X	183X14-9	BATTERY HOUSING SET		1			
C10	263005-3	RUBBER PIN 6		2			
099X		INC. 104					
100	263036-2	RUBBER PIN 5		1			
101	268184-2	PIN 1.5		1			
102	424473-7	CUSHION RUBBER		1			
103	424473-7	CUSHION RUBBER		1			
104	187377-1	BATTERY HOUSING SET		1			
C10	263005-3	RUBBER PIN 6		2			
104		INC. 99					
104X	183X14-9	BATTERY HOUSING SET		1			
C10	263005-3	RUBBER PIN 6		2			
104X		INC. 99					
105	286263-4	CAP 35		1			
106	233940-9	RING SPRING 19		1			
107	418217-5	CHUCK COVER		1			
108	345333-9	STOPPER		1			
109	216022-2	STEEL BALL 7.0		1			
110	345187-4	GUIDE WASHER		1			
111	233916-6	CONICAL COMP. SPRING 21-29		1			
112	267279-8	FLAT WASHER 21		1			
113	324355-2	TOOL HOLDER		1			
114	216013-3	STEEL BALL 6		2			
114	216013-3	STEEL BALL 6		2	*		
114-1	216062-0	STEEL BALL 6	O	2			
115	231669-1	TORSION SPRING 31		1			
116	345334-7	CHANGE RING		1			
117	418218-3	CHANGE COVER		1			
118	216018-3	STEEL BALL 5.0		1			
119	345335-5	LEAF SPRING		1			
120	267270-6	FLAT WASHER 24		1			
121	233924-7	RING SPRING 21		1			
122	893072-0	CLEAR LABEL		1	*		
122	893072-0	CLEAR LABEL		1	*		
123	890994-5	CLEAR LABEL		1	*		
123	890994-5	CLEAR LABEL		1	*		
124	424734-5	SPONGE	S	2			
124	424734-5	SPONGE		2			
A01	324219-0	DEPTH GAUGE		1			
A02	194079-2	DRILL CHUCK SET		1	*		
C10	251425-3	- FLAT HEAD SCREW M6X22		1	*		
C20	324353-6	CHUCK HOLDER		1	*		

C30	418216-7	SPACER		1	*		
A02-1	194079-2	DRILL CHUCK SET	<	1	*		
C20	324353-6	CHUCK HOLDER		1	*		
C30	418216-7	SPACER		1	*		
A02-1	194079-2	DRILL CHUCK SET		1	*		
C20	324353-6	CHUCK HOLDER		1	*		
C30	418216-7	SPACER		1	*		
A02-2	194079-2	DRILL CHUCK SET	O	1			
C20	324353-6	CHUCK HOLDER		1			
C30	418216-7	SPACER		1			
A03	***DC18RC	DC18RC FAST CHARGER		1			
A03	821552-6	CONNECTOR PLASTIC CASE (TYP E4)		1			
C10	453974-8	LATCH		4			
A03S	***DX02	DUST EXTRACTION SYSTEM		1			
A03S		COMPO-PARTS					
A03S		INC. A04					
A04	194204-5	BATTERY BL1830 SET		2	*		
A04	837649-1	INNER TRAY		1			
A04	196399-0	BATTERY BL1840 SET		2	*		
A04	196671-0	BATTERY BL1850 SET		2	*		
A04S	424474-5	SEALING CAP		5	*		
A04-1	194204-5	BATTERY BL1830 SET	O	2	*		
A04-1	196399-0	BATTERY BL1840 SET	O	2	*		
A04-1	196671-0	BATTERY BL1850 SET	O	2	*		
A04-1 S	422784-4	SEALING CAP	X	5			
A04-2	197600-6	BATTERY BL1830B SET	<	2	*		
A04-2	197265-4	BATTERY BL1840B SET	<	2	*		
A04-2	197280-8	BATTERY BL1850B SET	<	2	*		
A04-2 W	197280-8	BATTERY BL1850B SET		2	*		
A04-3	197600-6	BATTERY BL1830B SET	O	2			
A04-3	197265-4	BATTERY BL1840B SET	O	2			
A04-3	197280-8	BATTERY BL1850B SET	O	2			
A04-3 X	197280-8	BATTERY BL1850B SET		2			
A05	450128-8	BATTERY COVER		1			
A05L	802M30-3	DHR243ZJ INDICATION LABEL		1			
A05Q	803X40-9	DHR243YJ INDICATION LABEL		1	*		
A05-1 Q	805T64-7	DHR243Y1J INDICATION LABEL	<	1			
A06	141401-4	PLASTIC CASE COMPLETE		1	*		
C10	162271-8	LATCH		2	*		
C20	890904-2	INDICATION LABEL		1	*		
A06J	141402-2	PLASTIC CASE COMPLETE		1	*		
C10	162271-8	LATCH		2	*		
C20	890904-2	INDICATION LABEL		1	*		
A06	821552-6	CONNECTOR PLASTIC CASE (TYP E4)		1			
C10	453974-8	LATCH		4			
A06L	802M33-7	DHR243ZJ PLASTIC CASE LABEL		2			
A06Q	803X41-7	DHR243YJ PLASTIC CASE LABEL		2	*		

A06-1	141542-6	PLASTIC CASE COMPLETE	O	1			
C10	162271-8	LATCH		2			
C20	890904-2	INDICATION LABEL		1			
A06-1J	140H96-8	PLASTIC CASE COMPLETE	<	1			
C10	162271-8	LATCH		2			
C20	890904-2	INDICATION LABEL		1			
A06-1 Q	805T65-5	DHR243Y1J PLASTIC CASE LABEL	<	2			
A07H	802M42-6	DHR243RFE PLASTIC CASE LABEL		2	*		
A07J	802M46-8	DHR243RFEV PLASTIC CASE LABEL		2			
A07	837649-1	INNER TRAY		1			
A07	837677-6	INNER TRAY		1	*		
A07N	802M36-1	DHR243RME PLASTIC CASE LABEL		2	*		
A07Q	196235-0	BATTERY BL1815N SET		1	*		
A07R	804H95-1	DHR243RTE PLASTIC CASE LABEL		2	*		
A07W	835A31-4	INNER TRAY		1			
A07-1 H	802M41-8	DHR243RFE PLASTIC CASE LABEL	<	2			
A07-1	835A31-4	INNER TRAY	S	1			
A07-1 N	802M35-3	DHR243RME PLASTIC CASE LABEL	<	2			
A07-1 Q	196235-0	BATTERY BL1815N SET	O	1			
A07-1 R	805W76-8	DHR243RTE PLASTIC CASE LABEL	<	2			
A08J	***DX02	DUST EXTRACTION SYSTEM		1			
A08J		COMPO-PARTS					
A08J		INC. A09					
A08K	802M29-8	DHR243RFJ INDICATION LABEL		1			
A08M	802M31-1	DHR243RFJV INDICATION LABEL		1			
A08O	802M47-6	DHR243RMJ INDICATION LABEL		1			
A08P	802M50-7	DHR243RMJV INDICATION LABEL		1			
A08T	805R30-2	DHR243RTJ INDICATION LABEL		1			
A08U	805R32-8	DHR243RTJV INDICATION LABEL		1			
A08V	806H81-8	DHR243ZJV INDICATION LABEL		1			
A08W	818X90-1	DHR243RTJW INDICATION LABEL		1			
A08X	8063J5-4	DHR243RTJB INDICATION LABEL		1			
A09J	424474-5	SEALING CAP		5	*		
A09K	802M32-9	DHR243RFJ PLASTIC CASE LABEL		2			
A09M	802M34-5	DHR243RFJV PLASTIC CASE LABEL		2			
A09O	802M48-4	DHR243RMJ PLASTIC CASE LABEL		2			
A09P	802M51-5	DHR243RMJV PLASTIC CASE LABEL		2			
A09T	805R31-0	DHR243RTJ PLASTIC CASE LABEL		2	*		
A09U	805R33-6	DHR243RTJV PLASTIC CASE LABEL		2			
A09V	806H82-6	DHR243ZJV PLASTIC CASE LABEL		2	*		
A09W	818X91-9	DHR243RTJW PLASTIC CASE LABEL		2	*		
A09X	8063J6-2	DHR243RTJB PLASTIC CASE LABEL		2	*		
A09-1J	422784-4	SEALING CAP	X	5			

A09-1 V	817W66-9	DHR243ZJV PLASTIC CASE LABEL	O	2			
A10	***DX02	DUST EXTRACTION SYSTEM		1			
A10		COMPO-PARTS					
A10		INC. A11					
A10W	***DX07	DUST EXTRACTION SYSTEM		1			
A10W		COMPO-PARTS					
A10W		INC. A11					
A11	424474-5	SEALING CAP		5	*		
A11-1	422784-4	SEALING CAP	X	5			
A12	198993-4	GREASE VESSEL SET		1			
A13	837349-3	SPONGE 50-50	S	1			
B01	195834-5	HAMMER SERVICE KIT		1			
C10	195127-0	OIL VESSEL SET		2			
B01		INC. 44,45,47,105,109					
B01X	195834-5	HAMMER SERVICE KIT		1			
C10	195127-0	OIL VESSEL SET		2			
B01X		INC. 44,45,47,105,109					
F37-3	197606-4	BATTERY BL1830B SET (2PIECES)	O	1	*		
F41	195902-4	DUST EXTRACTION SYSTEM SET		1			
F48-1	199977-5	DUST CASE SET	O	1			
F50-1	199557-7	FILTER SET	O	1			
F52-3	197267-0	BATTERY BL1840B SET	O	1			
F53-3	197265-4	BATTERY BL1840B SET	O	1			
F54-3	197273-5	BATTERY BL1840B SET(2PIECES)	O	1			
F56-2	196235-0	BATTERY BL1815N SET	O	1			
F57-1	196449-1	BATTERY BL1815N SET	O	1			
F58-2	196449-1	BATTERY BL1815N SET	O	1			
F63	199570-5	DX07DUST EXTRACTION SYSTEM SET		1			
G12	1914X3-8	DUST EXTRACTION PAD SET		1			

Please state Parts No. when your order.

Print Date 04/01/2025