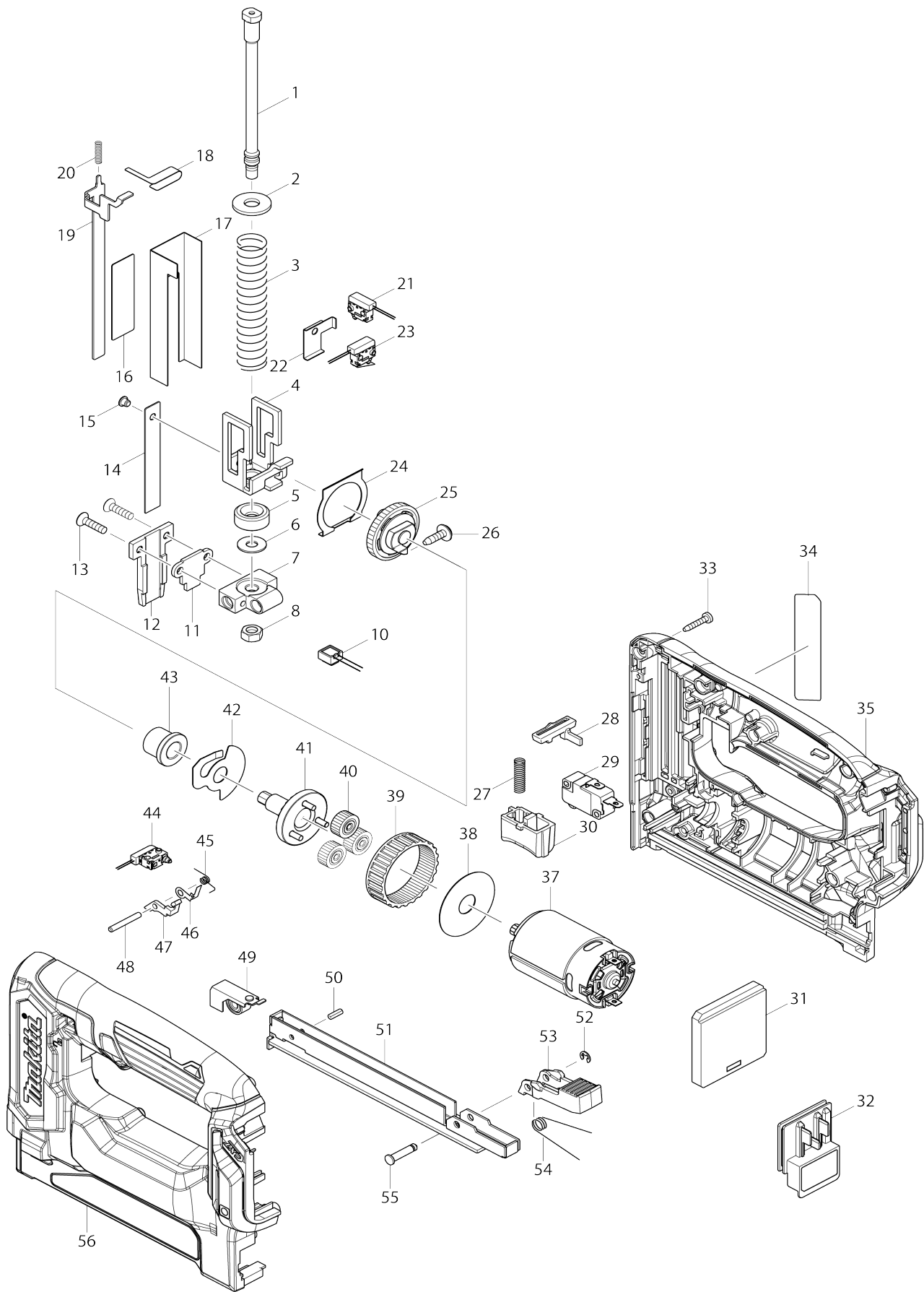


Model No.ST113D CORDLESS STAPLER



Model No.ST113D CORDLESS STAPLER

Item No.	Parts No.	Description	Interchangability	Q'ty	New/Old	Note1	Note2
001	326731-6	GUIDE BOLT		1			
002	253762-1	FLAT WASHER 8		1			
003	232297-5	COMPRESSION SPRING 13		1			
004	347023-0	HAMMER		1			
005	424099-5	CUSHION		1			
006	253804-1	FLAT WASHER 6		1			
007	319425-0	HOLDER		1	*		
007-1	319425-0	HOLDER	O	1			
008	931302-2	HEX. NUT M6		1			
010	620507-6	LED CIRCUIT		1			
011	347037-9	SET PLATE		1			
012	326738-2	DRIVER GUIDE		1			
013	251487-1	H.SOCKET C.S.HEAD SCREW M4X 16		2			
014	347034-5	DRIVER		1			
015	256318-9	FLAT FILLISTER HD. PIN 4		1			
016	347038-7	UPPER PLATE		1			
017	347036-1	GUIDE PLATE		1			
018	232300-2	LEAF SPRING		1			
019	347042-6	CONTACT ARM		1	*		
019-1	347316-5	CONTACT ARM	<	1			
020	232337-9	COMPRESSION SPRING 3		1			
021	632G60-2	SWITCH UNIT		1			
022	347121-0	SLIDE PLATE		1			
023	632G61-0	SWITCH UNIT		1			
024	347040-0	GEAR PLATE		1			
025	143770-9	SPUR GEAR 43 COMPLETE		1			
026	266901-4	TAPPING SCREW 4X14		1			
027	232299-1	COMPRESSION SPRING 5		1			
028	456799-9	TRIGGER LOCK		1			
029	632J09-0	SWITCH UNIT		1	*		
029-1	632M82-8	SWITCH UNIT	<	1			
030	457303-7	TRIGGER		1			
031	620598-7	CONTROLLER		1			
032	644813-5	TERMINAL		1			
033	266130-9	TAPPING SCREW BIND PT 3X16		10			
034	852U41-6	ST113D NAME PLATE		1	*		
034-1	852U40-8	ST113D NAME PLATE	<	1			
035	183F23-0	HOUSING SET		1			
C10	263002-9	RUBBER PIN 4		2			
C20	252126-6	HEX. LOCK NUT M4-7		2			
D10		INC. 56					
037	629240-7	DC MOTOR		1			
038	267053-4	FLAT WASHER 12		1			
039	227166-3	INTERNAL GEAR 69		1			
040	221961-3	SPUR GEAR 27		3			
041	143777-5	SPUR GEAR 7 COMPLETE		1			
042	345773-1	ANTI BACK PLATE		1			

043	214059-3	PLANE BEARING 10		1			
044	632G60-2	SWITCH UNIT		1			
045	232298-3	TORTION SPRING 3		1			
046	347041-8	SLIP PLATE		1			
047	456796-5	SWITCH PLATE		1			
048	256221-4	PIN 3		1			
049	143780-6	SPIRAL SPRING COMPLETE		1			
050	951051-5	SPRING PIN 3-8		1			
051	161467-8	SUB MAGAZINE		1			
052	961017-7	STOP RING E-3		1			
053	456798-1	LEVER		1			
054	232301-0	TORSION SPRING 7		1			
055	268029-4	PIN 4		1			
056	183F23-0	HOUSING SET		1			
C10	263002-9	RUBBER PIN 4		2			
C20	252126-6	HEX. LOCK NUT M4-7		2			
D10		INC. 35					
A01	195246-2	SAFETY GOGGLE		1	*		
A02	266622-8	+ TRUSS HEAD SCREW M4X12		1	*		
A02-1	251314-2	+ SCREW M4X12	O	1			
A03	346909-5	HOOK		1			
F01	197731-1	ADJUSTER SET		1			
F05	198968-3	BATTERY BL1016 SET		1	*		
F06	198969-1	BATTERY BL1016 SET (2PIECES)		1	*		
F07-1	198970-6	BATTERY BL1021B SET (2PIECES)	O	1	*		
F08-1	199002-2	BATTERY BL1041B SET (2PIECES)	O	1	*		
F40	347C56-3	HOOK		1			
A04	821549-5	CONNECTOR PLASTIC CASE (TYP E1)		1			
C10	453974-8	LATCH		4			
A05	839019-0	INNER TRAY		1			
A06	810X11-9	ST113DWMJ INDICATION LABEL		1	*		
A06-1	810X10-1	ST113DWMJ INDICATION LABEL	<	1			
A07	810X12-7	ST113DWMJ PLASTIC CASE LABEL		2			
A08	456128-6	BATTERY COVER		1			
A09	***DC10WC	DC10WC BATTERY CHARGER		1	*		
D10		COMPO-PARTS					
A09-1	***DC10WD	DC10WD BATTERY CHARGER	<	1			
D10		COMPO-PARTS					
A10	197402-0	BATTERY BL1040B SET		2	*		
A10-1	197406-2	BATTERY BL1041B SET	<	2	*		
A10-2	197406-2	BATTERY BL1041B SET	O	2			
A06	810X02-0	ST113DY1J INDICATION LABEL		1			
A07	810X03-8	ST113DY1J PLASTIC CASE LABEL		2			
A10	197390-1	BATTERY BL1015 SET		1	*		
A10-1	197393-5	BATTERY BL1016 SET	<	1			
A06	810X14-3	ST113DSAJ INDICATION LABEL		1	*		
A06-1	810X13-5	ST113DSAJ INDICATION LABEL	<	1			
A07	810X15-1	ST113DSAJ PLASTIC CASE LABEL		2			
A09	***DC10SA	DC10SA BATTERY CHARGER		1	*		
A09-1	***DC10SB	DC10SB BATTERY CHARGER	<	1			
A10	197394-3	BATTERY BL1020B SET		2	*		

A10-1	197396-9	BATTERY BL1021B SET	<	2	*		
A10-2	197396-9	BATTERY BL1021B SET	O	2			
A06	810X16-9	ST113DSMJ INDICATION LABEL		1			
A07	810X17-7	ST113DSMJ PLASTIC CASE LABEL		2			

Please state Parts No. when your order.

Print Date 05/24/2024