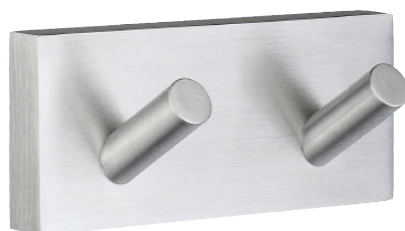


Environmental Declaration Sheet



Properties

Product: RS356

Description: HOUSE DOUBLE TOWEL HOOK BRUSHED CHROME

EAN: 7391447039832

Dimensions of consumer package (CM) : 4.100 x 4.500 x15.300

DUN: 17391447039839

Quantity of consumer package in Retail: 6

Dimension of retail package (CM): 22.000 x 14.200 x 4.600

Weight of retail package: 1.200

Material

Material	Weight kg
Body (Brass)	0.107
Glass/Porcelain Parts	
Rubber/Plastic(LDPE) Parts	
Mounting plate (SS304)	0.023
Screw Set (SS304)	0.012
Folder, manual etc. (Paper)	0.010
Packaging (PVC)	0.013
Plastic Detail (PP)	0.001
Packaging (Cardboard)	

Environmental Declaration Sheet

General information

Product care:	Wipe clean with a damp cloth only. Do not use strong cleaners.
Mounting Instruction:	Included in package
Environmental Instruction:	Currently, there are no applicable criteria for eco-labeling of the product.
Packaging:	Box/capsule of transparent plastic Insert of cardboard.
Supplier registered REPA-register:	Yes
Emissions have been measured:	No
Recycling possible:	Yes. The metal is recycled as scrap metal.
Estimated useful life:	10-25 years

Note: Products with chrome finish contains approximately 0.005 wt% chromium.