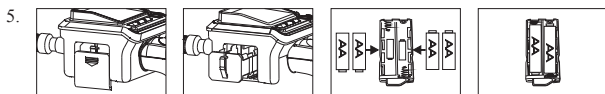
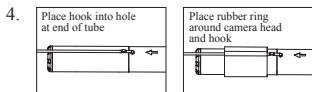
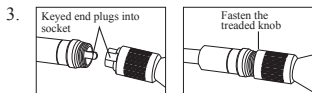
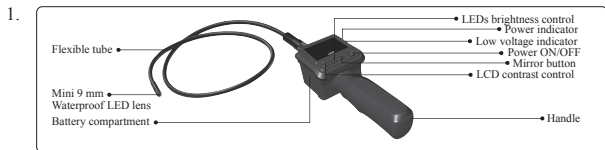


## Structure



English.....	1
Svenska.....	2
Norsk.....	3
Suomi.....	4
Deutsch.....	5
Netherlands.....	6
Français.....	7
Italiano.....	8
Español.....	9
Português.....	10
Polski.....	11
Eesti.....	12
Lietuviškai.....	13
Latviski.....	14

Portable video scope with colour monitor. For inspection and troubleshooting inside walls, machines, electrical cabinets, sewage etc. Easy to inspect in dark and inaccessible places. Integrate LED-lighting in camera head. The picture can be turned on the monitor. The camera and the flexible tube is self-supporting and waterproof.

Supplied complete with mirror, hook, magnet and manual. Batteries are not included.

Monitor	LCD	2,5"
Tube and camera head. Length	mm	900
Camera head . Diameter	mm	9
Tube. Diameter	mm	8
Protection class. Camera and Tube.	IP	67
View angle	°	50
Pixels Total		640x480
Operation. Temperature	°C	-10...+50
Batteries		4 pc 1,5V type. AA

## Display.

**On/Off.** Press Power ON/OFF button. Power indicator shows on. Picture 1 and 2.

**Install flexible camera arm.** Picture 3.

**Install accessories, hook, mirror, magnet.** Picture 4.

**Install batteries.** Low voltage indicator shows low voltage. Picture 5.

**Adjust LCD contrast.** Press LCD Contrast button. Picture 1.

**Adjust LED lights.** Press LED Brightness button. Picture 1and 2.

**Rotate the image 90°.** Press Mirror button. Picture 1.

**Maintenance.** Only camera arm is waterproof. Clean the other parts with dry rag. Avoid blows and drops etc. Change the batteries when the battery icon appears. Remove the batteries if the camera unused for a long time.